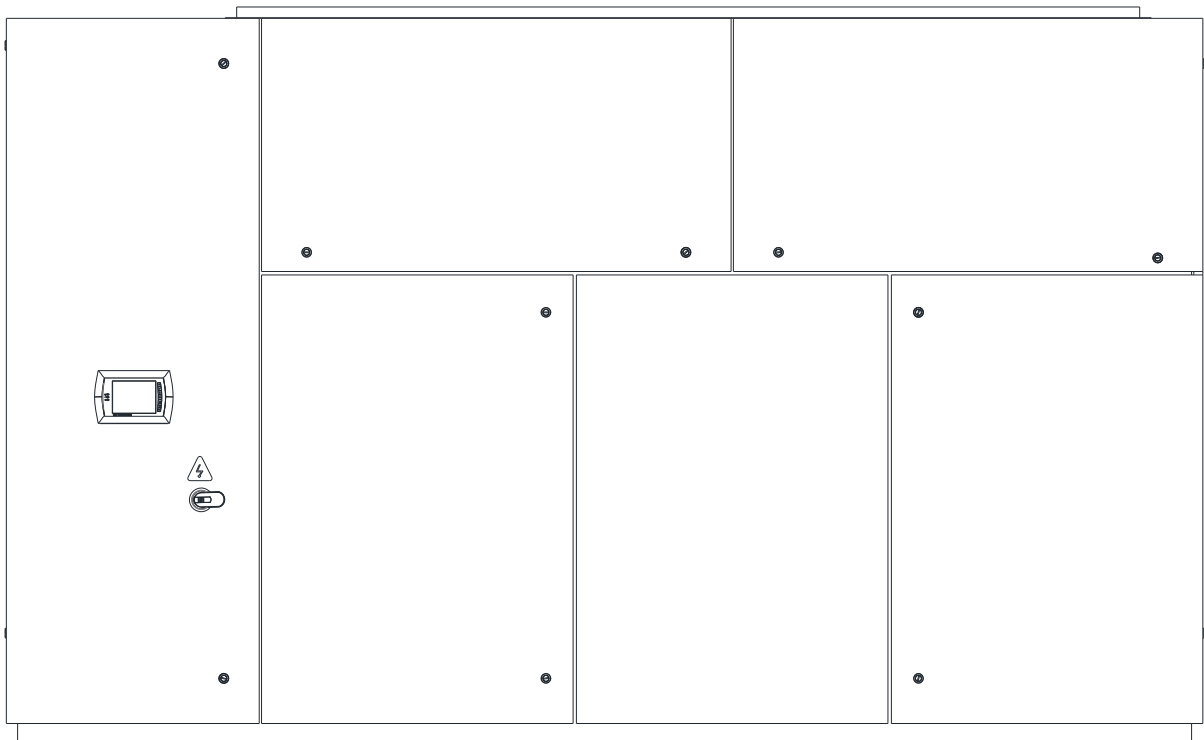




SYSTEM 2100
GLYCOL COOLED CAG-30 ENERGY MISER
-INSTALLATION AND OPERATION MANUAL-



8167 Byron Road Whittier, CA 90606
Phone: (562) 945-8971 Fax: (562) 696-0724
www.compu-aire.com



TABLE OF CONTENTS

1	SAFETY INFORMATION	5
2	CONTACTING COMPU-AIRE FOR TECHNICAL ASSISTANCE.....	10
3	PRODUCT MODEL INFORMATION	11
4	GENERAL EQUIPMENT DESCRIPTION	12
5	RECEIPT OF UNIT AND TRANSPORTATION.....	13
5.1	TRANSPORTATION MODE	13
5.2	IMPORTANT – READ BEFORE INSTALLING	14
6	LOCATING THE UNIT	14
6.1	Setting of the Unit	15
6.1.1	Down Flow Units	15
6.1.2	Upflow Units	15
6.2	Connections	16
6.2.1	Structural Support.....	16
6.2.2	Electrical Support	16
6.2.3	Condensate Drain Connection	16
6.2.4	Water Connection	17
6.2.5	Electrical Connection	19
7	REFRIGERANTS	20
7.1	REFRIGERANT OIL CHARGE	20
7.1.1	Evacuation Procedures	20
7.1.2	Liquid Charge	21
7.1.3	Vapor Charge	21
7.1.4	Leak Testing.....	22
7.2	HOW TO SAVE REFRIGERANT.....	22
8	GENERAL WIRING DIAGRAM	23
9	COMPONENTS OPERATION GUIDE AND MAINTENANCE.....	24
9.1	System Testing	24
9.1.1	Cooling	24
9.1.2	Heating.....	24
9.1.3	Humidification.....	24

9.1.4	Dehumidification.....	25
9.1.5	Electric Panel.....	25
9.2	Steam Humidifier	25
9.3	Reheat	26
9.4	Condensate Pump (optional):	26
10	UNIT DIMENSIONS AND GENERAL COMPONENT LAYOUT.....	28
11	COMPONENTS IDENTIFICATION & ACCESS	29
11.1	FRONT LAYOUT (CONTROL BOX).....	29
11.2	FRONT ACCESS.....	30
11.3	SIDE LAYOUT	30
11.4	STANDARD FLOOR STAND.....	31
12	SYSTEM CUT-OUT JUMPER FOR EMERGENCY SHUT-DOWN	32
13	REMOTE ALARMS.....	32
14	PIPING CONNECTION LAYOUT	33
14.1	WATER/GLYCOL LINE CONNECTION.....	33
15	START-UP AND TEST PROCEDURE	34
15.1	Check that ALL WIRING IS CORRECT	34
15.2	Check for Correct Phasing	34
15.3	Fan Speed Adjustment	34
15.4	No air flow & Clogged filter adjustment	34
16	GENERAL MAINTENANCE.....	35
17	REFERENCE DOCUMENTS	37
18	TROUBLESHOOTING GUIDE	39
18	PART LIST	45

FIGURES

Figure 1.	Unit Model Designation	11
Figure 2	Transportation	13
Figure 3	Floor Clearance Requirement	14
Figure 4	Typical Unit Field Piping Connection.....	18
Figure 5	Steam Humidifier	25
Figure 6	Reheat Elements	26
Figure 7	Condensate Pump Schematic	27

Figure 8. Unit Dimensions-Standard Unit shown.....	28
Figure 9 Sample Unit Shown*	29
Figure 10. Condenser and Reheat elements access	30
Figure 11. Unit Side Layout	30
Figure 12. Rear Open Floor Stand	31
Figure 13 - Terminal Block with System Cut-Out	32
Figure 14. Piping Connection	33
Figure 15: Air Pressure Differential Switch	35

ADDENDUM

CORRECT PHASING OF SCROLL COMPRESSORS:

The scroll compressor is a unidirectional compressor and will only compress refrigerant in one rotation direction. Therefore, the proper rotation of the scroll compressor must be checked. The scroll compressor will run in the reverse direction but it will not pump refrigerant and will draw substantially reduced current as compared to listed values, and will result in elevated sound levels. Scroll compressor will trip on internal protection after running for some time in the reverse direction.

Verification of the proper rotation of the scroll compressor is done by observing that suction pressure drops and discharge pressure rises when the compressor is energized.

WARNING:

EXTENDED IMPROPER OPERATION MAY ALSO VOID COMPRESSOR WARRANTY.

1 SAFETY INFORMATION

PLEASE CAREFULLY READ THE FOLLOWING SAFETY INFORMATION BEFORE PROCEEDING FURTHER

This installation and operation manual (IOM) contains important safety information that should be followed during installation or servicing of a System 2100 series. Below is general safety information as well as descriptions of safety and accident prevention symbols that will be utilized throughout this document. In addition to safety information provided by this manual, all warnings, cautions, and safety instructions located on the unit should be adhered to at all times. If applicable, local codes or ordinances and any other safety requirements must also be taken into consideration when installing or servicing the unit.

This IOM should be stored in a safe and accessible location for service personnel during installation or servicing operations. When no longer needed, this IOM should be returned to its original location for future reference.

General guidelines:

- a) Installation and maintenance are to be performed by qualified personnel only.
- b) Assure all field wiring conforms to the requirements of the equipment and all applicable national and local codes. Assure the voltage on the unit name-plate agrees with the power supply available.
- c) Avoid contact with any sharp edges. It may cause serious injury.
- d) Make sure all power sources are disconnected before any service work is performed on the equipment

DESCRIPTION OF IMPORTANT ACCIDENT PREVENTION SAFETY SYMBOLS

SYMBOL

DEFINITION¹



Indicates an extremely hazardous situation which, if not avoided, will result in death or serious injury. Use of this symbol is limited to the most extreme situations



Indicates a potentially hazardous situation which, if not avoided, could result in death or serious injury.



Indicates a potentially hazardous situation which, if not avoided, may result in minor or moderate injury. Caution may be also be used to alert against unsafe practices



Indicates a statement of company policy as the message relates directly or indirectly to the safety of personnel or protection of property

¹Accident prevention definitions per ANSI Z535.2- 2011.



HIGH VOLTAGE!

Unit utilizes high voltage power supply. There is a high risk of arc flash and electric shock. Always proceed with caution and wear protective equipment per NFPA 70E specifications at all times before working on the electrical control panel. Failure to comply can cause serious injury or death. The required unit power supply can be found on the nameplate located on the unit.

Service personnel should ensure that the main power supply to the unit is disconnected from the feeder when installation or servicing operations are being performed and when power is not needed.

System 2100 Series equipment requires a permanent power connection from an isolated circuit breaker. The customer must provide earth ground to the unit per NEC, CEC, and local codes when applicable.



INSTALLATION AND SERVICING PERSONNEL TRAINING & QUALIFICATIONS REQUIREMENTS

Installation and service of this equipment should be done only by qualified personnel who have been specially trained and qualified in the installation or servicing of HVAC equipment. Improper installation may result in unaccountable loss or damage.



EQUIPMENT TRANSPORTATION, PROPER BRACING, & HIGH-SPEED MOVING PARTS

Every precaution should be taken before the time of transportation of the equipment that all transportation equipment such as forklifts is properly rated to transport the equipment. Not doing so may cause equipment damage, injury, or death. Please refer to the shipping slip or contact the factory to determine the weight of the unit.

Once installation of the equipment is complete, the equipment should also be properly braced or anchored to the floor or wall if necessitated by local codes and ordinances. Upflow units are especially at risk of falling over due to the fact that EC plug fans are installed at a higher distance from the unit's base, causing the center of gravity to be higher from the base compared to downflow units.

High-speed moving parts can cause serious injury or death. Ensure that all unit panels are installed before any functional testing is done.



SHARP EDGES, SPLINTERS, EXPOSED FASTENERS, AND HOT SURFACES

While every precaution has been made to ensure sharp edges, splinters, and exposed fasteners have been minimized internally and externally on the unit to prevent personal injury, it is highly recommended that all personnel installing or servicing the unit wear safety headgear, glasses, gloves, and shoes at all times. In addition, precaution should be taken to ensure the unit is sufficiently cool to perform any type of servicing operations.

A first aid kit should be readily available and accessible at all times when needed.

NOTICE

EQUIPMENT STORAGE POSITION AND LOCATION

Improper storage of unit may cause unintentional damage. If possible, keep unit in the upright position and store unit indoors at all times before time of installation. In addition, steps should be taken to ensure that the unit is protected from dampness, freezing temperatures, and contact damage.

NOTICE

EQUIPMENT TRANSPORTATION

Prior to transporting unit to final installation location, ensure that there are no risks of overhead interference. Relevant measurements of the unit and all doorways should be taken to determine if unit will be able to be transported to its final location without causing damage to the building and to the unit itself. Required unit clearances at installation site should also be confirmed prior to unit transportation for safe and proper installation operations.

NOTICE

LOCATION OF DRAIN AND WATER SUPPLY LINES

Drains and water supply and return lines should not be located above any equipment that could sustain water damage.

NOTICE

CLOGGED OR LEAKING DRAIN LINES

Any clogged or leaking drain lines must be inspected and maintained to ensure that drain water runs freely through the drain system. Proper installation, application, and service practices should be used at all times to minimize the possibility of water leakage from the unit. Water leakage can cause

severe property damage and loss of critical data center equipment. Suitable leak detection system should be installed inside or around the proximity of the unit to minimize any type of property damage.

NOTICE

REFRIGERANT LEAKAGE DUE TO FREEZING TEMPERATURES AND/OR CORROSION

Refrigerant leaking from the unit coil or piping due to freezing and/or corrosion can cause serious equipment and building damage. Use of proper antifreeze and inhibitors can prevent freezing and premature coil corrosion. To ensure proper unit normal operation, it is highly recommended that the water or water/glycol solution used on the system be analyzed every six months to determine the pattern of inhibitor depletion.

2 CONTACTING COMPU-AIRE FOR TECHNICAL ASSISTANCE

Compu-Aire uses the latest in electronic and software technologies to develop some of the most reliable and cost efficient air conditioning systems in the world. Since many of our customer installations are sensitive to down time, we stock nearly all components for your system ready for same day shipment. In addition, our service departments can usually diagnose and repair the electronic components and return them to you within a few days.

Our customer support staff is available should you require assistance in diagnosing a problem or in setting up your air conditioning system. During usual business hour, you may call at (562) 945-8971 between 8:00am and 04:30pm, Pacific Time, Monday through Friday except holidays, or you may send a facsimile message at (562) 696-0724 anytime. Finally, you may write us at Compu-Aire, 8167 Byron Road, Whittier, CA 90606.

Please do not return system components without prior authorization from Compu-Aire. Whether repair or replacement is required for in warranty or out of warranty parts, Compu-Aire must know what is being returned to keep proper records of returned parts. Call Compu-Aire's service center for a returned merchandise authorization number (RMA) and clearly mark all packages on the outside with the number before sending them to us.

When contacting the factory, please have information ready as to the model and size of the air conditioner system and most important, the job number. Compu-Aire keeps a file on all equipment sold detailing system components using this latter number. All such information can be found on the Warranty Plate attached to each unit.

3 PRODUCT MODEL INFORMATION

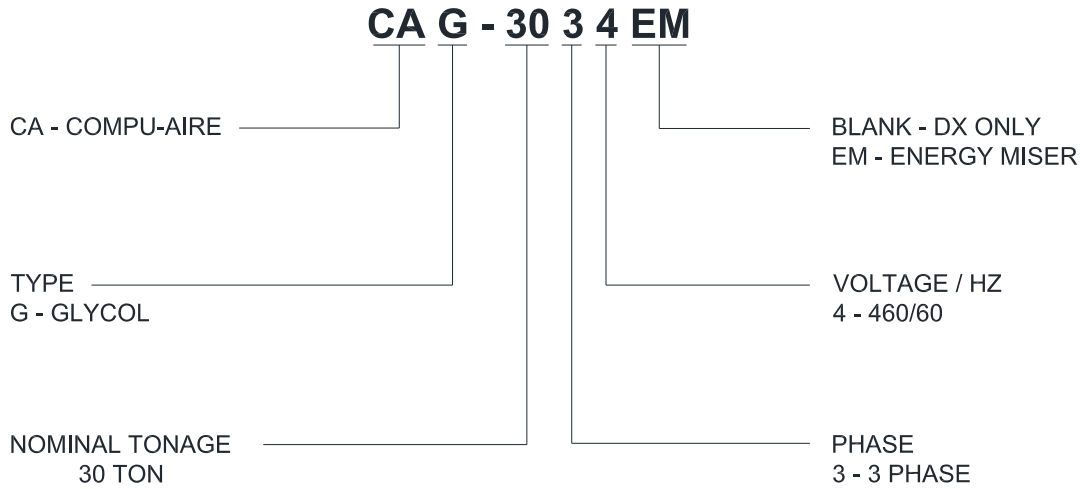


Figure 1. Unit Model Designation

SAFETY INSTRUCTIONS

This user's manual contains important safety instructions that should be followed to properly install and maintain Compu-Aire system 2100 series with glycol cooled unit. Read this manual thoroughly before attempting to install or operate this unit. Store this manual at safe place for future reference.

Adhere to all warnings, cautions and safety instructions on the unit and in this manual. Follow all local codes and safety requirements to install and service this unit.



WARNING

Installation and service of this equipment should be done by qualified personnel who have been specially trained and qualified in the installation of specific HVAC equipment. Improper installation could result in unaccountable loss or damage. ***COMPU-AIRE System 2100 series equipment requires a permanent power connection from an isolated circuit breaker. Customer must provide earth ground to the unit per NEC, CEC and local codes as applicable.***

- Risk of high speed moving parts can cause injury or death.
- Risk of heavy unit falling over
- Risk of hot surfaces, sharp edges, splinters and exposed fasteners can cause injury



WARNING

High voltage danger!

Arc flash and electric shock hazard.

Disconnect main power supply from the feeder before working on this unit. Proceed with caution and always wear protective equipment per NFPA 70E before working within electrical control panel. Failure to comply can cause serious injury or death.



WARNING

Evaporator unit requires drain connections. Do not locate these connections above any equipment that could sustain water damage.

NOTICE

- Improper storage can cause unit damage. Keep the unit upright and store it indoor. Protect the unit from dampness, freezing temperatures and contact damage.
- Risk of overhead interference. The unit may be too tall to fit through a doorway. Measure the unit and doorway heights and follow the installation plans to verify clearances prior to moving the unit.
- Risk of clogged or leaking drain lines. Drain line must be inspected and maintained to ensure that drain water runs freely through the drain system. Improper installation, application and service practices can result in water leakage from the unit. Water leakage can cause severe property damage and loss of critical data center equipment. Suitable leak detection system shall be installed for the unit and water supply lines to minimize the damage.

Risk of leaking unit coil/or piping due to freezing and/or corrosion can cause equipment and building damage.

4 GENERAL EQUIPMENT DESCRIPTION

The Compu-Aire System 2100 glycol cooled with energy miser series is a complete environmental control system, factory wired, tested, and specifically designed to provide temperature, humidity, and dust control for computer room installation. System 2100 is designed to provide precise temperature control by utilizing advanced digital and analog control via a programmable logic controller. Discharge air in the unit is provided by utilizing variable frequency fan blowers also known as plug or EC fans. The unit as shipped from the factory includes blower/motor package, electrical control package, and other specified special options.

5 RECEIPT OF UNIT AND TRANSPORTATION

Upon receipt of the unit, a visual inspection is required. The unit packaging should be entirely intact and the crate should not be damaged. Transport the unit to the desired location in the upright position to avoid damaging to any external panels or internal components. Once the unit is uncrated and in the desired location, inspection of the unit for any external damage is crucial as this may be indicative of internal damage. Any signs of damage to the packaging or system panels or incomplete shipments require a claim to be filed with the shipping company. Freight damage claims are the responsibility of the receiver.

Any items designated as field installed shall be packaged inside of the unit and must be removed and installed prior to startup of the equipment.

Optional articles such as jack-stand parts, condensate pump, and remote control panel are packaged separately.

REPORT ANY DAMAGE TO THE CARRIER. COMPU-AIRE IS NOT RESPONSIBLE FOR FILING OF ANY CLAIMS. ALL NEEDED INSPECTION AND CLAIM FILING IS THE RESPONSIBILITY OF THE RECEIVER

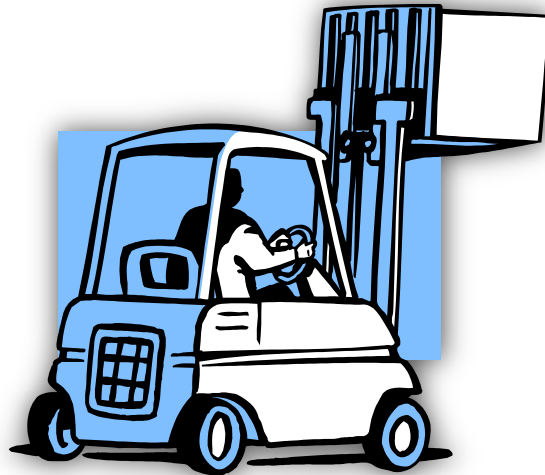


Figure 2 Transportation

5.1 TRANSPORTATION MODE

Visual inspection of the outer casing provides a simple indication of possible internal damage to the equipment. Move the unit to the installation site in the upright position.

FILE A CLAIM WITH THE SHIPPING COMPANY IF THE SHIPMENT IS DAMAGED OR INCOMPLETE. FREIGHT DAMAGE CLAIMS ARE THE RESPONSIBILITY OF THE RECEIVER.

Optional articles such as jack stand parts, condensate pump, and remote control panel are packed inside the unit.

5.2 IMPORTANT – READ BEFORE INSTALLING



Check the power supply. Voltage, frequency and phase must correspond to that specified on the unit nameplate. The power supply must be able to handle the additional load imposed by this equipment.

6 LOCATING THE UNIT

Consult local building codes and National Code for special installation requirements. When installing the unit, allow sufficient space for air flow clearance, wiring and servicing the unit. Left side, right side and front should have a minimum clearance of 36 inches for servicing. Rear clearance should be at least 1 inch to allow for out-of-square walls. The unit may be set directly on top of the raised floor or on adjustable jackstands.

The unit should not be placed near any corner of the room. For best air distribution, the unit should be placed in mid-point against the longest wall, and as close to the load(s) as possible. For multiple units, place them as far apart from each other as possible for optimum air distribution. Before placing a unit directly on the raised floor, it is important that the proper openings have already been cut.

The location of the unit shall be selected based on air distribution in the room and service access requirement. Proper clearance is important for the unit function and access to various components for service.

Front clearance: 38"

Left clearance: 38"

Right clearance: 38"

Rear clearance: 1"

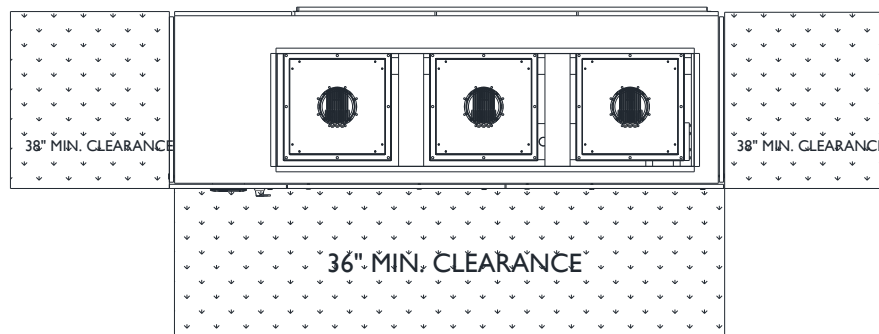


Figure 3 Floor Clearance Requirement

-
- Install unit on leveled solid floor that can support the unit weight and vibrations.
 - Securely mount the unit with floor and brace it with wall if needed.
 - Install the unit closer to the largest heat load.

Air distribution is very important for proper unit operation. Air balancing is required to obtain design CFM at site. Fan speed can be adjusted from the controller as needed. Several feet of clearance must be maintained between the supply air and return air intake of the unit. In existing room, the unit supply air shall be directed towards the air intake side of the heat load. Always locate air intake of the servers and any other heat load in the cold aisle for efficient air distribution. The unit supply air shall never be directed towards the exhaust fan of any heat load in the room.

6.1 Setting of the Unit

Locate the unit so the desired clearances are provided, paying special attention to floor height for downflow units. Make sure that piping under floor does not interfere with the discharge air of the unit. Unit can sit on an elevated flooring while remains fully accessible. Floor stand or other support maybe used to further support the unit.

After moving the unit to the desired location, the system needs to be leveled and anchored to the floor as directed by the building design engineer, typically using wedge anchors. Prior to anchoring the unit to the floor, verify locations for Chilled Water Supply and Chilled Water Return line connections, drain line connection as well as the electrical power input locations are matching with unit location requirement. Proper electrical supply power is an absolute necessity as the unit is designed specifically for the requirements on the nameplate. All knock-out shall be provided by others in the field.

The unit is designed with draw-thru air pattern with negative pressure inside. The condensate drain connection with a proper p-trap is factory installed to prevent the water is drawn back by the fans.

6.1.1 Down Flow Units

Down flow units are required to be installed on floor stands. Verify that the raised floor has been properly sized for the design air flow. The raised floor shall be free of air flow restrictions. The height of the adjustable floor stand can be raised or lowered through the use of the adjusting rods. The supply air shall be directed into the cold aisles and avoid any short cycling of cold air back to the unit return air. Floor stand height for down flow models shall be selected based on unit CFM, fan size and static pressure requirement. The floor stand must be securely mounted and all locknuts must be tightened to assure rigidity. See provided floor stand drawing for installation detail.

6.1.2 Upflow Units

The unit may be placed directly on the sub floor. The up flow unit may have duct connection or an optional discharge air plenum. Typical up flow unit has front return configuration but optional rear return with filter box is available.

The most desirable location to maintain appearance is against a wall. All incoming pipes and wires can be fed to the unit directly through the wall. If the room is equipped with the raised floor, the unit can be located anywhere

6.2 Connections

In connecting the unit, several items must be addressed. They are:

6.2.1 Structural Support

The unit can be installed directly on the floor or on the raised floor without the need for any special support. The floor should be level. Gasket material should be placed between the bottom perimeter of the unit and the floor on the downflow unit to act as vibration isolator. The gasket should be foam, $\frac{1}{2}$ " x $\frac{3}{8}$ ". No gasket is needed on the upflow unit.

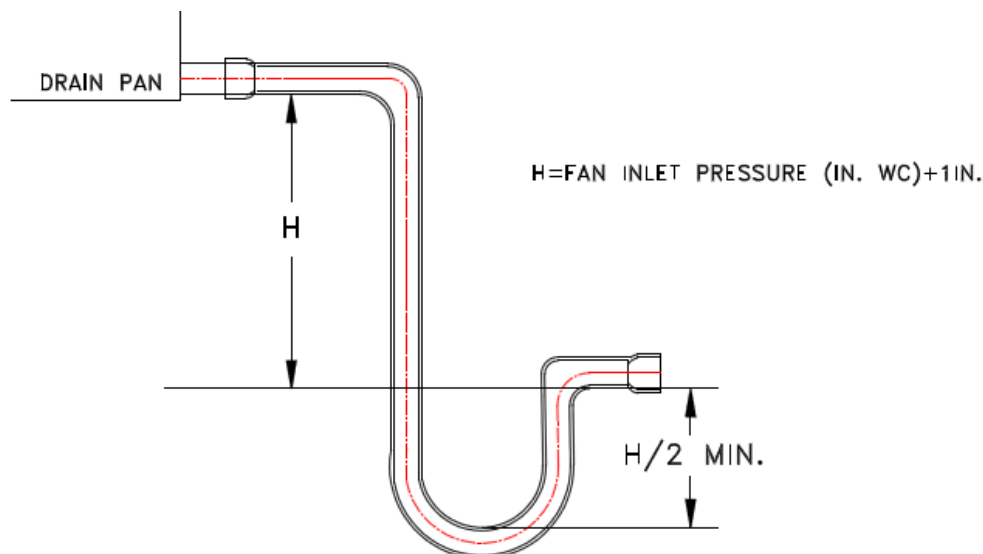
6.2.2 Electrical Support

A fused disconnect or a HVAC approved circuit breaker must be field provided and installed per the National Electric Code (NEC). There is access to the unit for electrical connection through the unit bottom or the top panel on the unit. Be sure unit is properly grounded.

A fused disconnect must also be provided for the air cooled condenser/condensing unit for air cooled units and dry fluid cooler of the glycol cooled units..

6.2.3 Condensate Drain Connection

This must be equipped with $\frac{3}{4}$ " O.D. drain line. The contractor must provide and install a P-trap in this line at the lowest point in the unit or below the unit. A minimum slope of $\frac{1}{4}$ " per foot must be provided on the horizontal run. Condensate water will not drain thus possibly causing water carry over into the air space. The p-trap must be calculated as per Figure 7 below. **After installation of the p-trap, verify trap operation by running the system blowers at full speed and adding water to the drain pan, water should drain out of the condensate pan and through the trap with supply fan running at full speed.**



6.2.4 Water Connection

Follow local and building codes for field piping installation. A close circuit dry fluid cooler is to be used. A pump package for field install by other is generally included in the system with separate cabinet unit. Provide a shut off valve in supply and return line for isolation. Refer to general unit dimension for location of piping connection access.

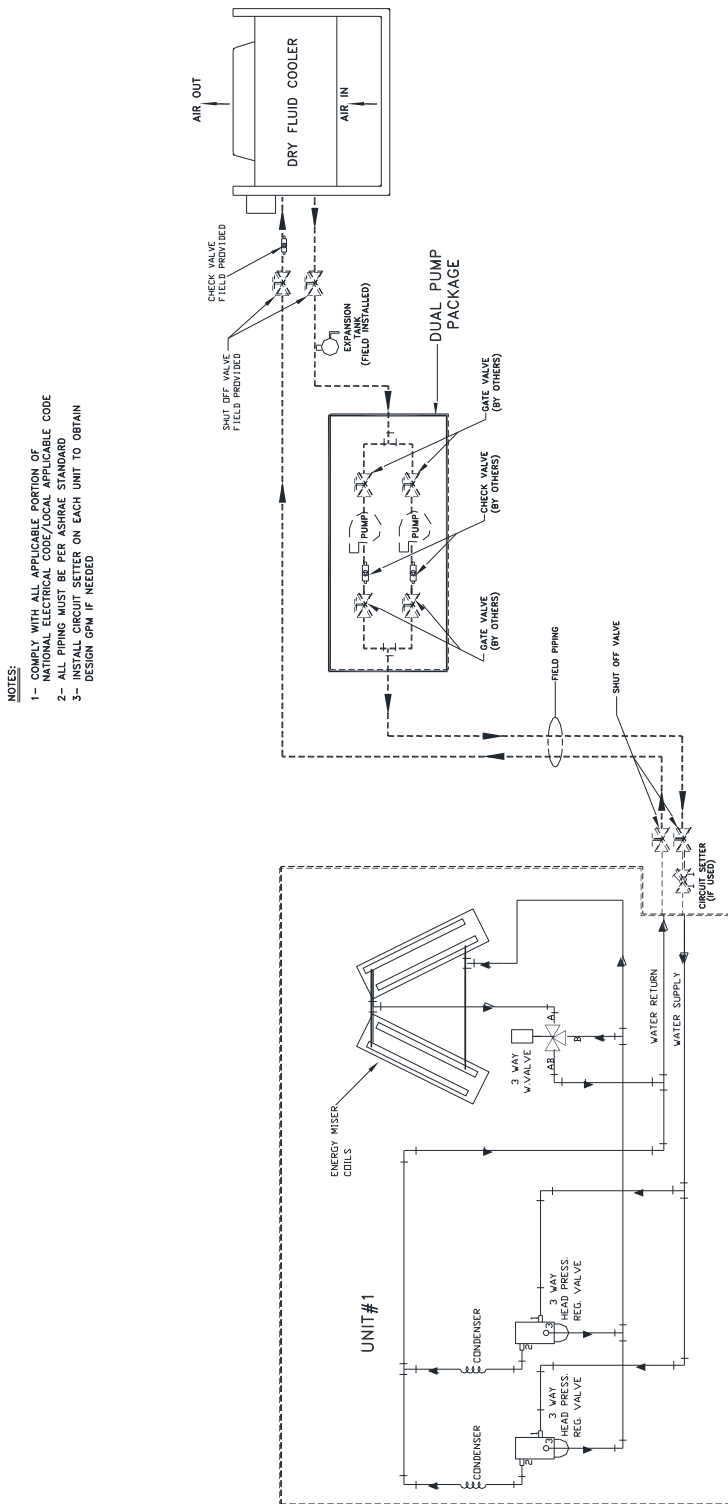


Figure 4 Typical Unit Field Piping Connection

Note: Glycol and water cooled units are designed for maximum of 150 psig water pressure. Higher pressure units are available; refer to unit nameplate.

6.2.5 Electrical Connection

The unit is completely factory wired with self-contained controls.

IMPORTANT - Before proceeding with the electrical connections, make certain that the volts, hertz and phase correspond to that specified on the unit rating plate. Also, check to be sure that service provided by the utility is sufficient to handle the additional load imposed by this equipment. Refer to the unit rating plate for equipment electrical requirements. The attached wiring diagram shows the proper high and low voltage field wiring.

Make all electrical connections in accordance with National Electrical Code and any local code ordinances that may apply. **USE COPPER CONDUCTORS ONLY.**

WARNING -- The unit cabinet must have an uninterrupted or unbroken electrical ground to minimize personal injury if an electrical fault should occur. It is important that an electrical ground wire of adequate size can be connected to the ground lug provided inside the control box.

Supply voltage at the unit must be within $\pm 10\%$ of the voltage indicated on the nameplate for a dual voltage rating, supply voltage must be within 5% from the lower nameplate rating and within 10% from the higher rating. Phase to phase imbalance must not exceed 3%. Contact your local utility company for correction of improper line voltage. Improper electrical power supply may cause premature failures and void unit warranties

The system cutout terminals on the terminal strip are for connection to a "panic button" or remote shut-off if required. This should only be connected to a switch and **NO EXTERNAL SOURCE OF POWER SHOULD BE INTRODUCED AT THIS POINT.** The conductors should be sized depending on the length of run and the number of control transformers used in the unit. **Maximum voltage drop must not exceed 1 volt.** Each control transformer draws approximately 3 amps @ 24 V. For long runs where the conductor size becomes too large, an interlocking relay (field provided) should be used.

A dry contact (24 volts rating) is provided for terminals for a remote alarm connection.

If the control panel includes a condensate probe, make sure it is mounted below the unit against the floor area where water may collect. To check the operation of the probe, submerge it in a cup of water. The condensate alarm should energize.

7 REFRIGERANTS

7.1 REFRIGERANT OIL CHARGE

DO NOT MIX DIFFERENT TYPE OF REFRIGERANT ON THE SAME SYSTEM.

For adding refrigerant oil please follows compressor manufacturer for the proper type of refrigerant oil used for the system. **DO NOT MIX DIFERRENT TYPE REFRIGERANT OIL IN THE SAME SYSTEM OR COMPONENT FAILURE AND SYSTEM MALFUNCTION MAY OCCUR.**

The system 2100 unit is shipped with factory pre-charged refrigerant or nitrogen. System must be charged enough with correct type of refrigerant and refrigerant oil. Generally, the oil charge should be 2 to 3% of the liquid line charge. **USE ONLY POLYOL ESTER (POE-32) OIL FOR ALL THE COMPRESSORS.** See the compressor name plate for original oil charge. Manufacturer recommends compressor should be charged 4 fluid ounces (118 ml) less than the name plate value for a full complete recharge on the compressor.

It is recommended if the system contains more than 20 lbs (9 kg) of refrigerant; add one fluid ounce for every additional 5 pounds (15ml/kg) of refrigerant over this amount.

7.1.1 Evacuation Procedures

CAUTION: PULL ALL FUSES EXCEPT MAIN FAN AND TRANSFORMER FUSES. To reduce the possibility of non-condensable in the refrigerant system during charging, the solenoid valves must be open and a vacuum must be pulled on both the suction side and the discharge side of the compressor.

PROCEDURE FOR DEHYDRATION - METHOD #1

- 1) Open all disconnects switches.
- 2) Pull all fuses except main fan and transformer fuses.
- 3) Turn disconnect ON
- 4) Start the main fan by pushing the main fan switch.
- 5) Check amperage on main fan and make sure it does not exceed FLA (full load amps).
- 6) Check fan rotation and correct if necessary.
- 7) Set thermostat at 40°F.
- 8) Proceed with paragraph #4 in procedure #2.

PROCEDURE FOR DEHYDRATION - METHOD #2

By using a separate control voltage transformer having an output of 24 volts at 40 VA, the solenoid can be energized without starting the unit.

- 1) Turn all power OFF to the unit.

-
- 2) Remove all fuses including main fan and transformer fuses.
 - 3) Connect the external transformer to the solenoid valves.
 - 4) Evacuate the system in accordance with the following procedure:

Connect the refrigeration gauges on circuits #1 & #2 at both the suction and discharge service valves.

Start with circuit #1 and open all service valves. Place in circuit #1, 150 psig of DRY NITROGEN with a tracer of Freon for the purpose of leak checking. With pressure in circuit #1, open the discharge and suction valve on compressor #2. If pressure increases in #2, the system is cross circuited and must be re-checked for proper piping. If there is no pressure increase, place 150 psig of DRY NITROGEN with a tracer of Freon in circuit #2 and leak test.

After completion of leak testing, release test pressure & pull a vacuum on the system. Leave this pulled down for approximately 4 hours and re-check the gauge reading. If it has not changed purge with Freon, pull another vacuum of 250 microns, leave on for 2 hours and re-check the gauge readings. Purge with Freon and re-pull the vacuum of 250 microns (9.842 in. hg.) or less. After the completion of this step, fill the system with Freon vapor until pressures have equalized in the liquid and discharge lines.

7.1.2 Liquid Charge

After the final vacuum has been pulled on the systems, liquid refrigerant may be placed in the receivers. This is accomplished by the following procedure:

- 1) Make sure the unit is off and that the solenoids are closed.
- 2) Connect a set of manifold gauges to the refrigerant drum and to the receiver at the rotalock adapter.
- 3) Purge the refrigerant hoses so that no non-condensable will enter the systems.
- 4) Open the refrigerant drum so that the liquid will flow from the drum to receiver.
- 5) Open the rotalock valve and allow the refrigerant to flow into the receiver.
- 6) Close the rotalock valve and disconnect gauges.
- 7) Start the compressor.

7.1.3 Vapor Charge

- 1) After the dehydration procedures have been followed, replace the fuses in the condenser fan compressors and transformer circuits.
- 2) Connect hose from drum to suction port of the compressor, purge hose so that no non-condensables are in the hose.

3) Start the compressors check the level in the sight glass. If the level has lowered, add additional Freon to maintain the sight clear. After charging is complete, reset the high pressure switch.

Approximate charge required per circuit:

As recommended by ASHRAE MANUAL.

Total Charge = Basic Charge + Liquid Line Based on Hermetic and scroll Compressor Line and Refrigerated Liquid at 100F

7.1.4 Leak Testing

No installation is complete until the entire system has been thoroughly checked for leaks. This includes water tubing, humidifier make-up water, and condensate lines (if provided)

7.2 HOW TO SAVE REFRIGERANT

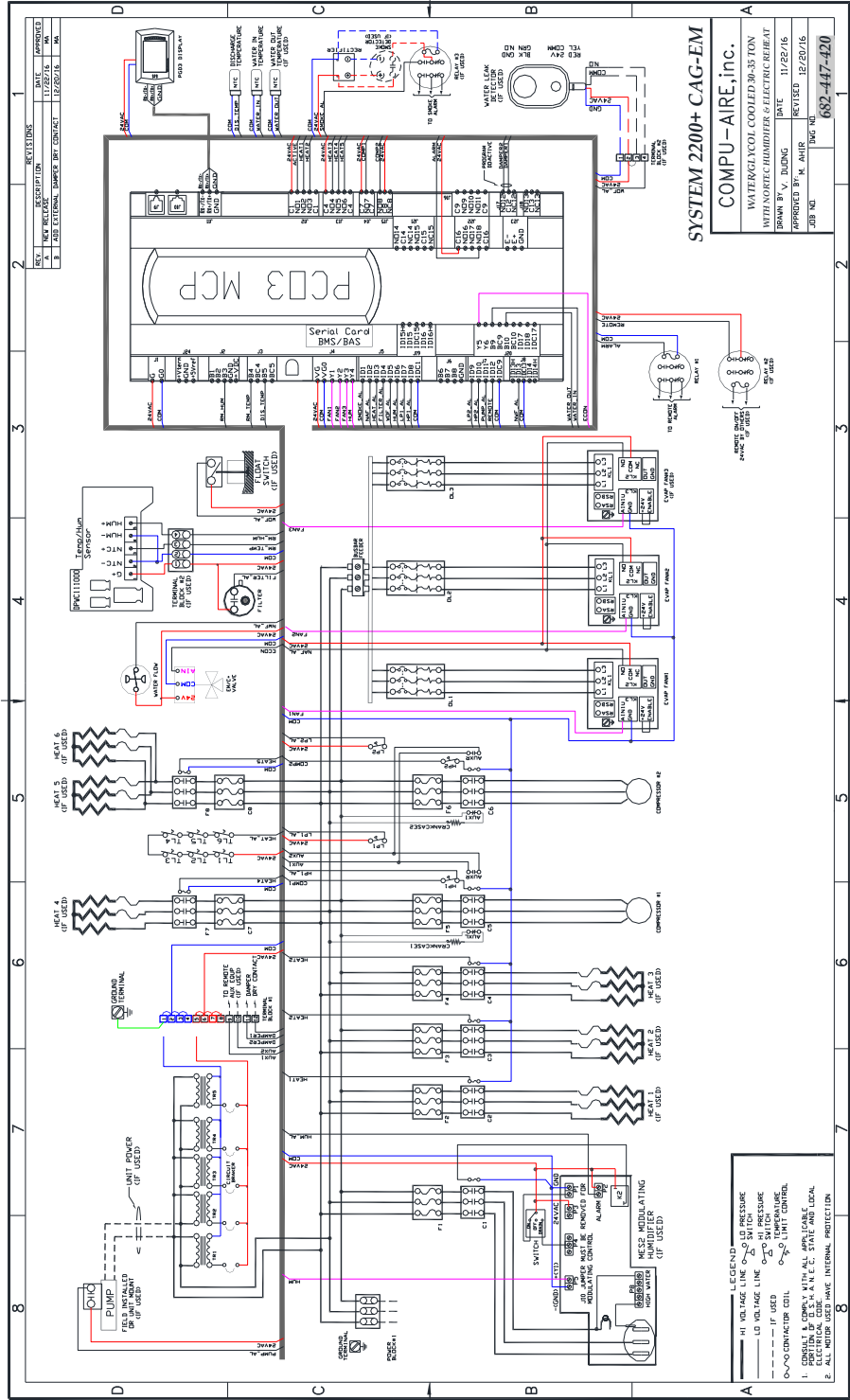
The process of opening a refrigerant circuit of the Maxi Kool and saving the refrigerant charge of the system to be opened requires only a few more minutes than does blowing the refrigerant charge.

Intentionally blowing the charge is illegal.

The procedure for saving the refrigerant charge is as follows:

- 1) Open disconnect switch.
- 2) Pull fuses on system not to be opened.
- 3) Install manifold on the receiver at each rotalock valve, using the high pressure gauge and the charging hose.
- 4) Purge the hoses to remove any condensables.
- 5) Start the unit and set the thermostat at 40 degrees F; this will start the compressor.
- 6) Return to the receivers.
- 7) Backseat the rotalock valves on the system being pumped down. Open gauge and rotalock valve on the other system.
- 8) During this procedure, watch the gauge pressure to prevent the receiver from over-filling. If the gauge pressure starts to rise, do not let the pressure exceed setting on pressure relief device located on the receiver.
- 9) Open the rotalock valve of the system, release vapor pressure present and make necessary repairs.
- 10) Evacuate the system. After evacuation is complete, the liquid can be transferred back into the proper system, through the manifold gauge.

8 GENERAL WIRING DIAGRAM



SUBJECT TO CHANGE WITHOUT INCURRING DELIGATION

9 COMPONENTS OPERATION GUIDE AND MAINTENANCE



HIGH-SPEED MOVING PARTS

Risk of high-speed moving parts can cause injury or death. Disconnect all local and remote electric power supplies and make sure blowers have stopped rotating before performing service operations.

Do not operate up-flow units without installing a supply air plenum, ductwork or protective guard over the blower openings.

The unit you have received is very special. It is specifically designed for Computer Room applications. Please read the following INSTRUCTIONS prior to working on the equipment.

ELECTRICAL DATA: 208v, 3 phase, 60 h, 460v, 3 phase, 60 hz, 208v, 1 phase, 60 hz, 575v, 3 phase, 60 hz, 3 phase, 60 hz, or 415/380v, 3 phase, 50 hz.

Please check the voltage.

NAMEPLATE DATA: Refer to the unit name plate. It indicates all the electrical data for the unit.

LOCAL ELECTRICAL CODES OR ANY OTHER APPLICABLE CODES MUST BE COMPLIED WITH PRIOR TO WORKING IN THE UNIT.

9.1 System Testing

The performance of all control circuits can be tested by actuating each of the main functions. This is done by temporarily changing the set points.

9.1.1 Cooling

To test the cooling function, set the setpoint for a temperature of 10°F (5°C) below room temperature. A call for cooling should be seen and the equipment should begin to cool. A high temperature alarm may come On. Disregard it. Return setpoint to the desired temperature.

9.1.2 Heating

Reheat may be tested by setting the setpoint for 10°F (5°C) above room temperature. A call for heating should be seen and the heating coils should begin to heat. Disregard the temperature alarm and return the setpoint to the desired temperature.

9.1.3 Humidification

To check humidification, set the humidity setpoint for an RH 10% above the room humidity reading. For infrared humidifiers, the infrared element should come On. Steam generating humidifiers should click immediately as it energizes. After a short delay, the canister will fill with water. The water will heat and steam will be produced. Return the humidity setpoint to the desired humidity.

9.1.4 Dehumidification

Dehumidification can be checked by setting the humidity setpoint for an RH 10% below room relative humidity. The compressor should come On. Return humidity setpoint to the desired humidity.

9.1.5 Electric Panel

The electric panel should be inspected for any loose electrical connections

9.2 Steam Humidifier

The steam humidifier on System 2100 system is the most advanced OEM steam humidifier and provides steady and reliable humidification using the same proven cylinder technology as Nortec's commercial NHTC. Depending on the unit configuration, the steam humidifier capacity can range from 5 to 30 lb/hr. Each steam humidifier has different size of mounting cabinet and replaceable canister. Please refer to **Error! Reference source not found.** for the correct part number of the humidifier. **Refer to supplied installation and operation manual of the steam generator humidifier for a complete guidance.**

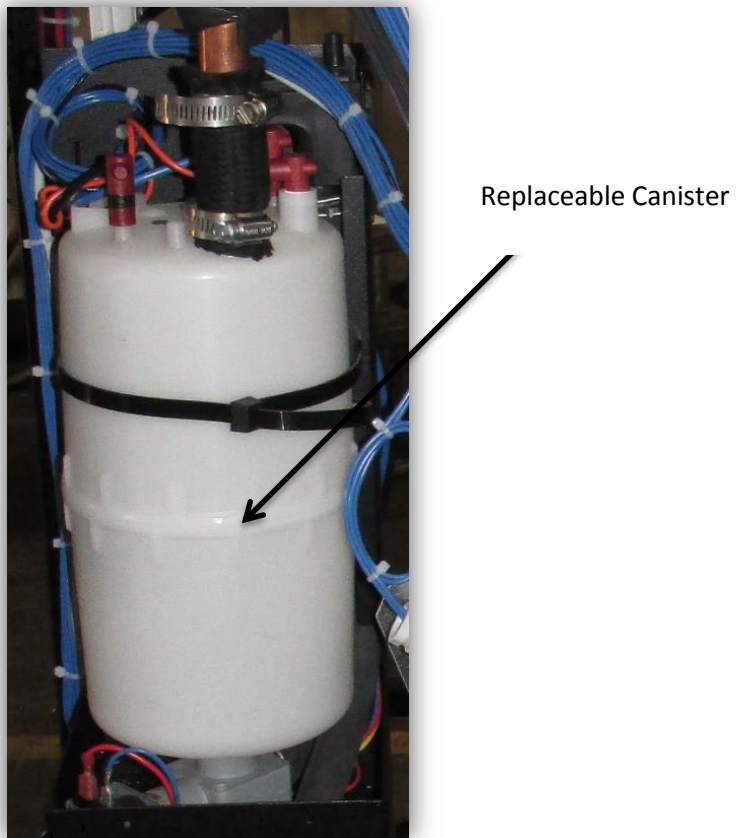


Figure 5 Steam Humidifier

9.3 Reheat

Unit is equipped with one of the following reheats:

- Electrical heating elements
- Hot Gas
- Hot Water
- Steam
- No reheat

Check your unit for the kind of reheat it has. For type hot water and steam piping connections are required. Make sure shut off valves are provided external to the unit.

The most common type of reheat used in Compu Kool III unit is the electrical heating elements. The number of the stages and elements depend on heating required for dehumidification.

Temperature Limit
Switch capillary tube



Figure 6 Reheat Elements

9.4 Condensate Pump (optional):

When provided it is shipped separately or factory installed inside the Crac unit. To avoid any flooding problems provide a separate power source. WIRE THE PUMP TO SHUT THE SYSTEM OFF IN CASE OF OVERFLOW OR PUMP FAILURE. A SYSTEM CUT OFF TERMINAL IS PROVIDED IN THE UNIT.

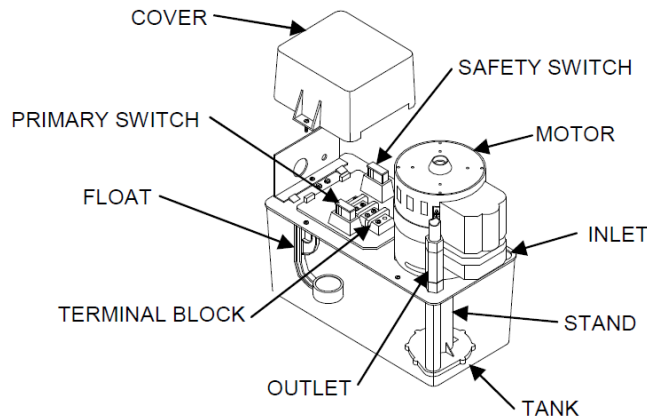


Figure 7 Condensate Pump Schematic

Refer to the provided owner’s manual for a complete installation guide of the condensate pump.

COMPRESSOR: Standard units are provided with scroll compressors. Each compressor is provided with a safety high pressure switch. It is manual resettable and is factory set to open at 400 psig. A low pressure switch is also provided which is automatic reset.

ALL REFRIGERATION PIPING SHALL BE INSTALLED PER ASHRAE STANDARDS.

DRY FLUID COOLERS: These are mostly dropped shipped on the job site prior to the air conditioner. These units are shipped from the factory with the following:

- A. Control Box
- B. Surge Tank (if ordered it is pre-piped)
- C. Pump Mounting Kit consisting of a special mounting leg and a weather shield (optional)

It is recommended to check the manufacturer’s literature for more detail of the dry fluid cooler prior the unit installation.

PUMPS FOR CKG MODELS: These are shipped from Compu-Aire along with the air conditioners unit. Pump supplied are internally protected, but in many localities local codes require that a separate fused disconnect be provided. These pumps are to be field mounted. Every care should be taken to ascertain that no undue noise or vibration be carried to the structure. Provide vibration eliminator and shut off valves.

DUAL PUMP PACKAGE WITH AUTOMATIC CHANGE OVER AND MANUAL CHANGE OVER (optional) FOR CKG MODELS: Control panel are factory supplied for field installation. Flow switch and check valve are to be supplied and installed by the contractor per drawing shown inside.

IMPORTANT SUGGESTION

In order to have trouble free operation free operation, please maintain the humidifier and change filters when dirty.

For assistance, please call COMPU-AIRE, INC. at (562)945-8971

10 UNIT DIMENSIONS AND GENERAL COMPONENT LAYOUT

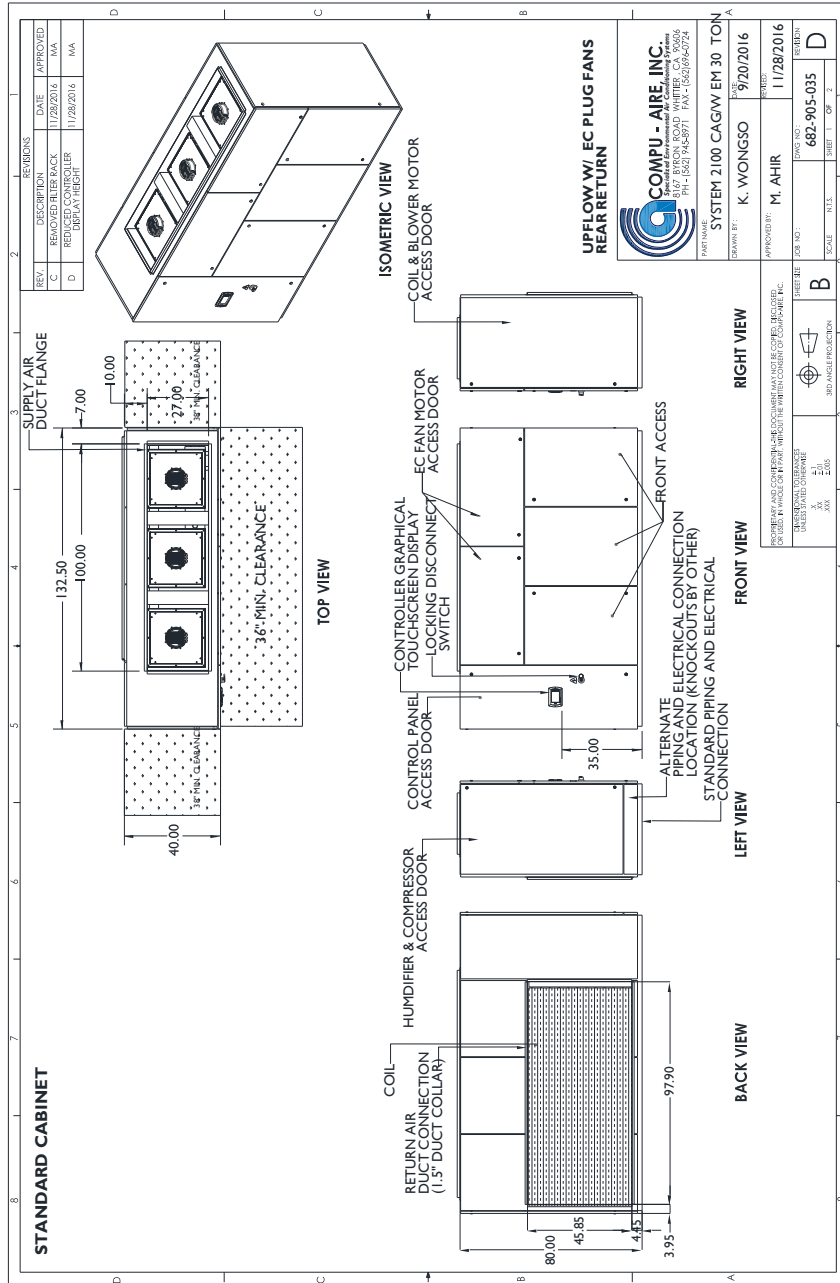


Figure 8. Unit Dimensions-Standard Unit shown

11 COMPONENTS IDENTIFICATION & ACCESS

11.1 FRONT LAYOUT (CONTROL BOX)

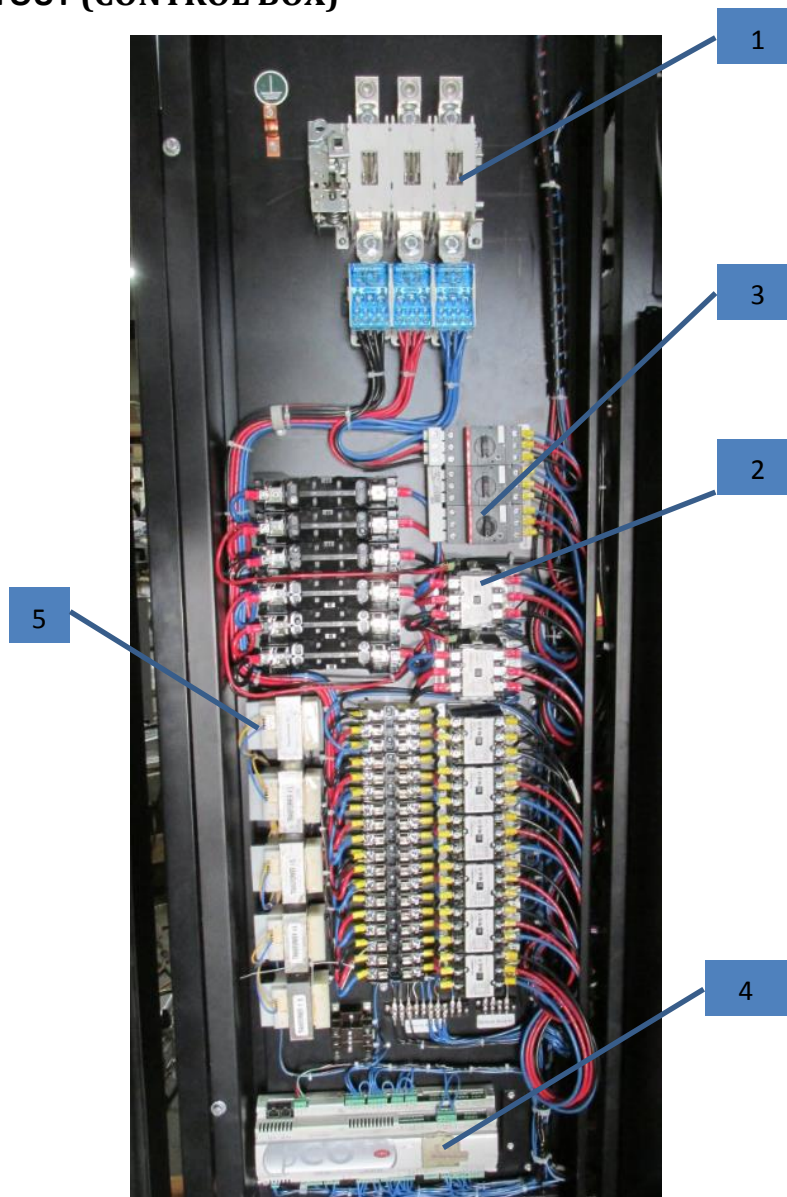


Figure 9 Sample Unit Shown*

*Actual unit may be different

NUMBER	NAME
1	DISCONNECT SWITCH
2	CONTACTORS
3	MOTOR PROTECTORS
4	MICROPROCESSOR CONTROLLER
5	TRANSFORMERS

11.2 FRONT ACCESS

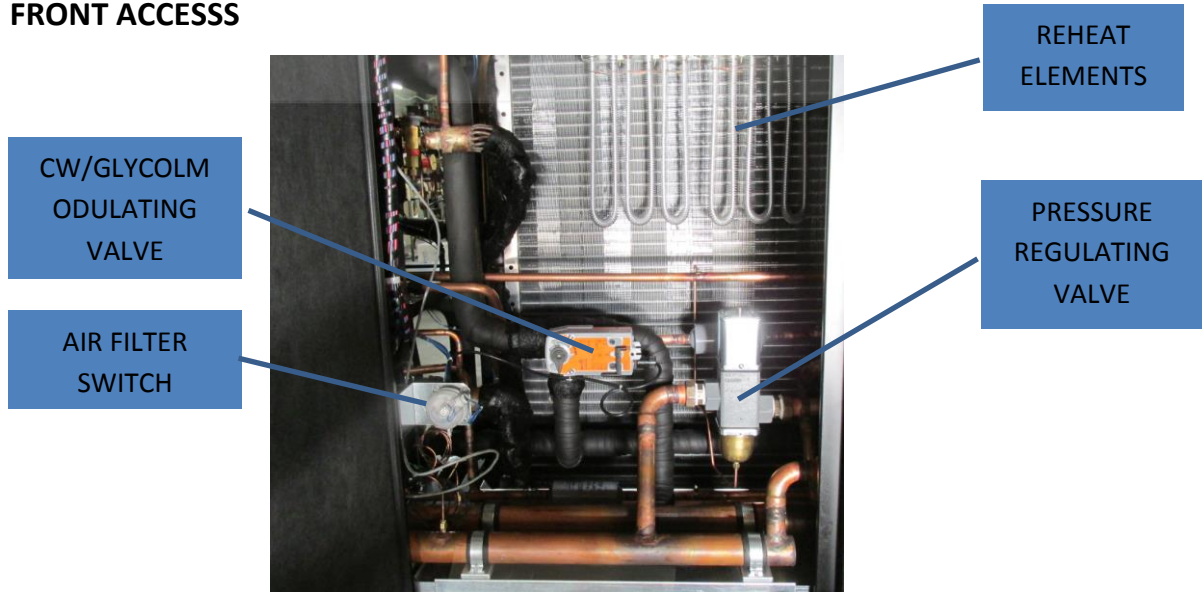


Figure 10. Condenser and Reheat elements access

11.3 SIDE LAYOUT

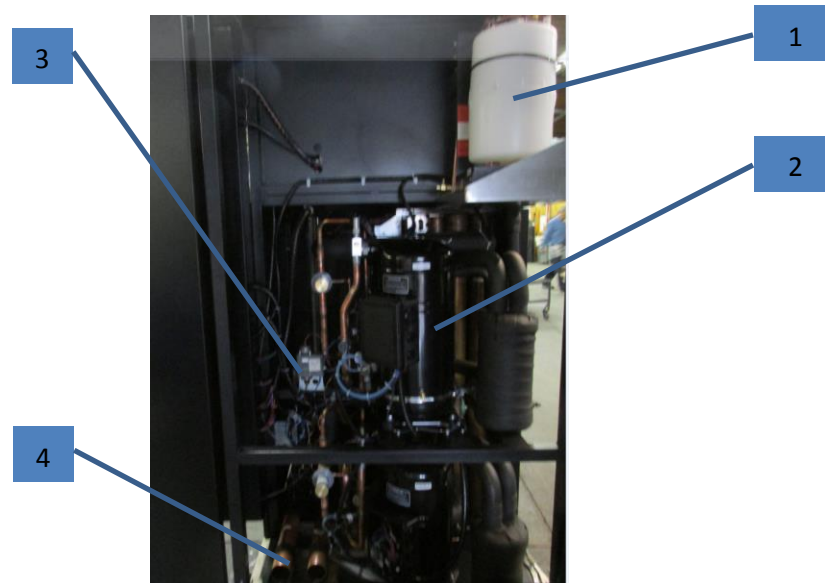


Figure 11. Unit Side Layout

1	HUMIDIFIER
2	COMPRESSOR
3	HOT GAS BYPASS VALVE, SOLENOIDS,ETC
4	PIPING CONNECTION

11.4 STANDARD FLOOR STAND

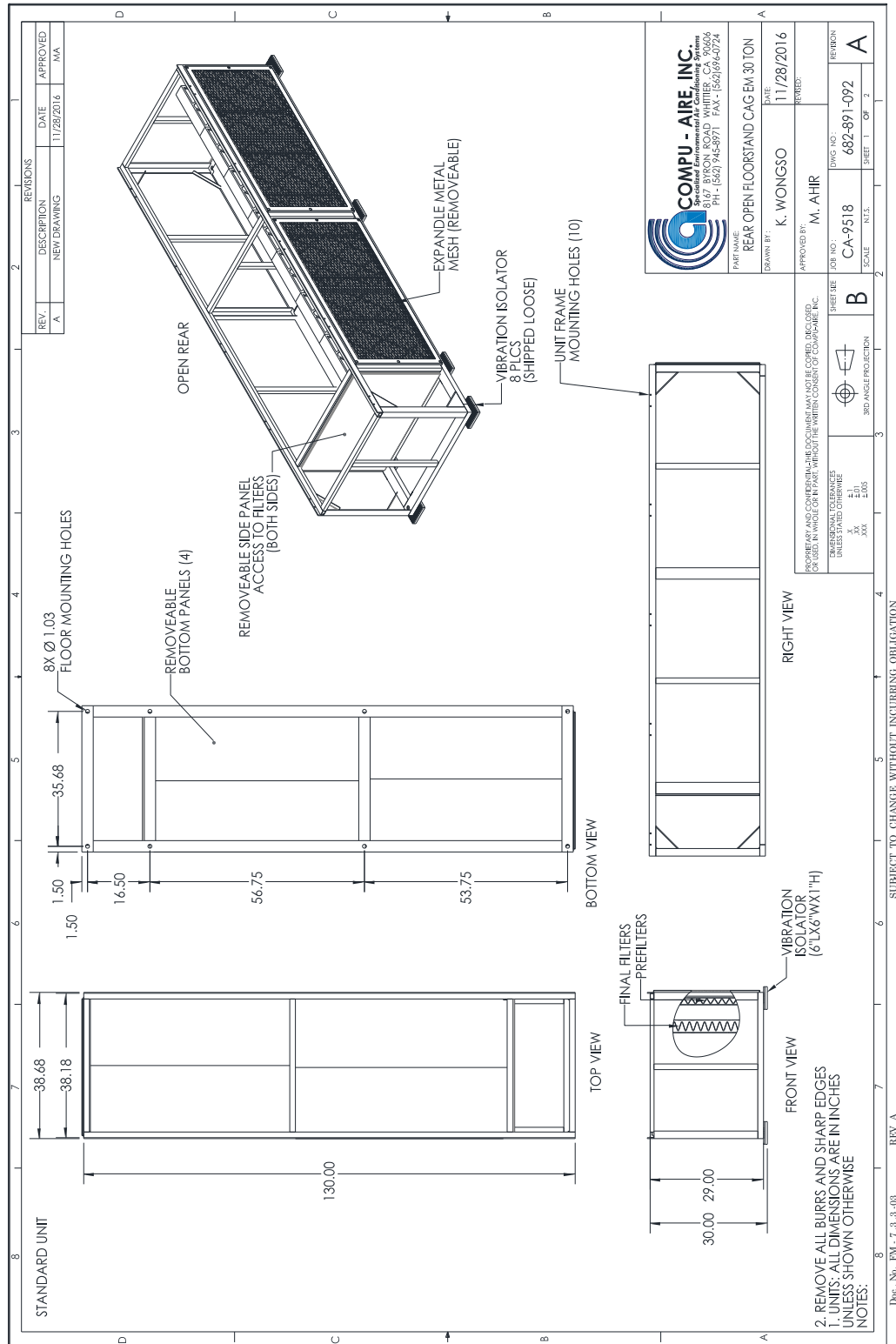


Figure 12. Rear Open Floor Stand

12 SYSTEM CUT-OUT JUMPER FOR EMERGENCY SHUT-DOWN

The unit is completely factory wired with self-contained controls to run without using external system cut-out. When external system cut-out is used, remove the jumper between terminal 5 and 6 and use NC dry contact of field provided system cut-out relay.

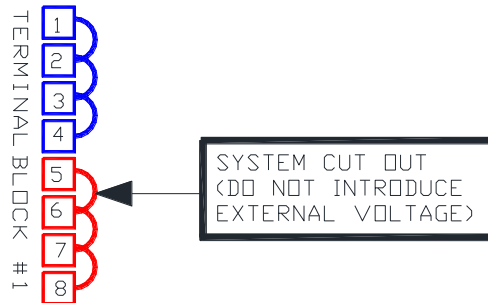


Figure 13 - Terminal Block with System Cut-Out

The system cut-out terminal on the terminals strip is for connection to a “panic button” or EPO Switch when emergency shut-down is required. The system cut-out jumper shall only be replaced by separate dry contact for each unit and **NO EXTERNAL SOURCE OF POWER SHOULD BE INTRODUCED AT THIS POINT**. The EPO relay must be installed in the unit control panel to minimize voltage drop in control circuit.

Remote ON/OFF relay shall not be used for emergency shut-down purpose. This relay is design to provide systematic shut down by the controller programming. Remote ON/OFF relays can be disabled from controller programming and unit may not shut-down in case of emergency.

13 REMOTE ALARMS

One Alarm Relay with a set of dry contact is provided for remote connection whenever the unit alarm is energized. Default setting for this alarm relay is programmed to be energized for global alarm however; it can be changed to selectable alarm to customize for specific alarms only. See controller guide for more detail on how to program this relay for selectable alarms.

If unit is provided with extra relays, see unit wiring diagram and submittal for detail.

If the unit is provided with condensate overflow sensor, the unit mounted control panel includes a condensate probe module. The condensate probe sensor shall be shipped loose for field installation. Condensate probe sensor shall be located underneath the unit where water may collect to sense any condensate overflow. To check the operation of the probe, submerge it in a cup of water. The condensate alarm should energize.

If the unit is provided with sensing cable type leak detection system, use specific manual provided by the manufacturer to install the complete system. Alarm relay dry contact from sensing cable type leak detection system can be connected to the digital input for condensate alarm of unit controller. Use 24VAC power from the unit terminal block for this alarm input

14 PIPING CONNECTION LAYOUT

14.1 WATER/GLYCOL LINE CONNECTION

Note: Water side operating pressure not to exceed 125 PSIG. Optional high pressure rated valve is available from the factory.

Unless specified water/glycol piping connections are located on the left bottom corner of the standard unit. On standard connection, field pipings are from the side of the unit on the bottom of the side door by making knockouts. Alternatively field piping access can be from the bottom of the unit with optional floorstand shall be used to support the unit.

After all connections are made to the unit, close-off and seal all air openings around the pipes using tubing insulation material such Armaflex.



Figure 14. Piping Connection

UNIT PIPING
CONNECTION

15 START-UP AND TEST PROCEDURE

15.1 Check that ALL WIRING IS CORRECT

To perform this test the unit must be turn OFF. Check that properly sized fuses are installed in the disconnect switch. Correct fuse size and minimum circuit ampacity are listed on the unit nameplate. Now, check the wiring connections in the Main Control Panel to see if they are tight. It is best that this be checked prior to operating the machine. After checking, close the Main Control Panel cover and proceed as follows:

Microprocessor Control Panel – With the system switch in the “OFF” position, apply power to the unit. The “Power ON” light should illuminate.

15.2 Check for Correct Phasing

The equipment should now be checked for correct phasing required to make the blower motor turn in the correct directions. For this test it is necessary to open the right side doors of the unit to observe the blower and blower motor. Now, momentarily switch the system switch to the “ON” position and then back to “OFF”. The blower motor will have started and it is therefore possible to determine rotation. On Compu-Aire units, the blower should be rotating in a CLOCKWISE direction in downflow units and COUNTERCLOCKWISE direction in upflow units, looking in the right side of the unit. Heaters and humidifiers are not affected by phasing.

15.3 Fan Speed Adjustment

Adjustment of the air flow may be desired. The air flow can be readily adjusted with the variable pitch pulley provided on the blower motors. After the unit has been started and the air flow properly adjusted, check the blower motor current to ensure it is increased, the blower motor current should be checked. If a field adjustment is made, the motor should run for at least one hour at maximum design room temperature to see if motor trips on internal overload. For proper motor amps refer to the name plate.

15.4 No air flow & Clogged filter adjustment

The "No Air Flow" light and alarm should be checked prior to the completion of the installation. Although the control is adjusted at the factory, varying local conditions make it impossible to provide accurate pressure adjustments.

To check the filter pressure switch, let the unit operate on cooling for about 30 minutes. This will allow the evaporator coil surface to become wet. The air pressure differential switch is provided with adjustable knob. Set the knob to desired pressure drop for dirty filter and verify the Dirty Filter alarm. With the unit cooling and filters in place, block off approximately 75% of the air intake. If the sensing device is correctly adjusted, the "Clogged Filter" alarm should energize; the sensing device should have just turned on the alarm at the 75% blocked inlet condition. An Air Flow Switch is also provided at the discharge side of the blower and will activate the No Air Flow malfunction light and alarm.

Similar to the clogged filter switch, adjustment may be necessary for the no air flow switch(s). The loss of airflow switch is wired in the normally closed position to open on airflow and the dirty filter switch is wired to the normally open position and set to close with dirty filter. Adjustment can be made by removing the top cover and turning the dial to the proper pressure. See Figure 9 below.



Figure 15: Air Pressure Differential Switch

16 GENERAL MAINTENANCE

General maintenance must be performed in regular intervals to provide continued operation of the entire unit. The maintenance intervals must be determined site specifically. Use the maintenance checklist at the end of this manual when performing maintenance. Typically, air filters should be replaced no less than two times per year.

The filters should be checked and changed periodically. When they become dirty, an alarm is activated the filter pressure switch. If the filters are dirty, they must be changed for efficient operation of your system. To check the alarm indicator, cover approximately 75% of the return air opening; the alarm should energize. If the alarm energizes prematurely or does not energize when it should, adjust the filter switch. All doors to machine should remain closed before determining whether an adjustment is necessary. Spare filters should be kept in stock. Filters should be checked monthly and replaced if necessary.

The maintenance intervals must be determined site specifically. Use the maintenance checklist at the end of this manual when performing maintenance. In order to ensure that the refrigeration system runs trouble free for many years, a follow-up maintenance program (consisting of a minimum of two inspections per year) should be set up. A qualified refrigeration service mechanic should carry out this semi-annual inspection. The main power supply **must be disconnected and locked off** to avoid accidental startup of the equipment.

-
- (1) Check electrical components and tighten any loose connections.
 - (2) Check all wiring and electrical insulators.
 - (3) Check contactors to ensure proper operation and contact point for wear.
 - (4) Check that fan motors (if applicable) are operational, ensure fan blades are tight and all mounting bolts are tight.
 - (5) Check oil and refrigerant levels in the system.
 - (6) Ensure that the condenser surface (if applicable) is cleaned and free of dirt and debris.
 - (7) Check the operation of the control system. Make certain that all of the safety controls are operational and functioning properly.
 - (8) Check all refrigeration piping. Make sure that all mechanical joints and flare nuts are tight.

Service Parts Availability

Genuine replacement service parts should be used whenever possible. Parts may be obtained by contacting your local sales representative or authorized distributor. Contact us 562.945.8971

17 REFERENCE DOCUMENTS



MAINTENANCE CHECKLIST

Inspection Date _____
Job Name _____
Unit Model # _____
Unit Serial Number # _____
Room Temperature _____° Humidity _____%
Ambient Temperature _____°

Filters

- ___ 1. Check/replace filters
- ___ 2. Grille area unrestricted
- ___ 3. Wipe section clean
- ___ 4. Coil clean

Blower Section

- ___ 1. Blower wheel(s) free of debris
- ___ 2. Check belt tension and condition (replace if needed)
- ___ 3. Check bearings
- ___ 4. Check sheave/pulley (replace if worn)
- ___ 5. Check motor mount
- ___ 6. Motor amp draw L1 _____ L2 _____ L3 _____
- ___ Compare measured amp draw to nameplate rating

Reheat

- ___ 1. Inspect elements
- ___ 2. Check wire connections (inside reheat box)
- ___ 3. Reheat amp draw _____ #1 _____ #2 _____ #3

Steam Generating Humidifier

- ___ 1. Check drain valve/drain lines/trap for clogs
- ___ 2. Check water make-up valve and all hoses for leaks
- ___ 3. Clean strainer
- ___ 4. Replace humidifier bottle if necessary

-
- ___ 5. Check operation of humidifier
 - ___ 6. Humidifier amp draw L1 _____ L2 _____ L3 _____

Condensate Pump

- ___ 1. Check for debris in sump
- ___ 2. Check operation of float(s) (free movement)

Electrical Panel

- ___ 1. Check fuses
- ___ 2. Check contactors for pitting
- ___ 3. Check all wire connections

Controls

- ___ 1. Check/Verify Control Operation (Sequence)
- ___ 2. Check operation of the airflow switch
- ___ 3. Check setting/operation of the clogged filter switch
- ___ 4. Check/test changeover device(s)
- ___ 5. Check/test water detection device(s)

Notes _____

Signature _____
Company _____

18 TROUBLESHOOTING GUIDE

Complaint	Problem	Symptom	Action
1. System does not run.	No 24VAC supply voltage.	Power LED is not on.	Check circuit breaker in system 24VAC circuit and reset if necessary. Check System cutout switch. Test for 24VAC at pins 1 and 2 of MCP. If no voltage check machine wiring. Otherwise, if voltage replaces MCP.
	System is not turned on.	Power LED is on but, System LED is off.	Press the On button on the MCP. If the system does not start and the display is blank, replace the MCP.
	Bad or locked up MCP.	Display is blank, shows erroneous characters or does not change messages.	Press Off button on MCP then press On button. If the system does not start or if the display still shows erroneous information, replace the MCP.
Complaint	Problem	Symptom	Action
2. Nothing is visible on the display or is barely visible.	Display contrast is adjusted too low.	Power is on and system is running okay. But, nothing is visible or is barely visible on display.	Refer to the section MCP Circuit Adjustments, in this guide. Adjust display contrast for best visibility. The display will not be visible unless light is directed into it (it does not have its own light source).
3. Temperature or humidity displayed is wrong.	Sensor circuits are out of calibration.	Displayed value(s) are wrong by a few increments.	If the value is wrong by a few degrees or percent when compared to an accurate measuring instrument, then try

			recalibrating the sensor circuits (see the section MCP Circuit Adjustment, in this guide).
	Wiring to sensor circuit board(s) are loose or broken.	Display shows very high or low values or values that change erratically.	Check all wiring between the sensor circuit board and the MCP for loose connections. If the values
Complaint	Problem	Symptom	Action
			don't change and they seem to be at an extreme high or low, test for 24-VAC at the sensor board. Test for continuity between Temp and Hum on the sensor board and pins 9, 14, and 16 on the MCP. If tests fail repair or replace wiring to sensor boards. If tests are okay, swap connections between pins 14 and 16 and observe whether display tracks each okay. If it does, replace the sensor. If it doesn't, replace the MCP.
Complaint	Problem	Symptom	Action
4. Sensor(s) do not adjust into range.	Circuits on MCP are out of calibration.	Displayed values change but, adjustments to the sensor circuit board do not bring the temperature or humidity displayed to the actual value.	See the section, Adjusting MCP Circuits in this guide. If those adjustments fail and instructions for item 3 above have been followed, contact Compu-Aire for further assistance.
5. System does not cool or does not cool sufficiently.	Control parameters are not set correctly or are	System seems to function okay otherwise.	Refer to the section in this guide, Environment Control Settings, and

	not set as expected.		check that all parameters are set correctly.
	Compressor is not running because of high or low pressure failure.	Display shows compressor failure alarm. Alarm LED is on.	Determine cause of high or low pressure failure and remedy. Press Reset button on MCP.
Complaint	Problem	Symptom	Action
	Compressor is not running because of loose or broken wiring.	Display shows DX cooling is on and there are no compressor failure alarms.	Test for 24VAC at pin 17 and 27 of MCP terminal block while shows DX cooling. If voltage, check wiring back to compressor contactor. If no voltage at pin 27, check wiring back to 24VAC transformers in system. If voltage at pin 27 but not at 17, replace MCP.
Complaint	Problem	Symptom	Action
	Chilled water valve is not opening because of loose or broken wiring.	Display shows chilled water cooling is on or economy cooling is on but, the valve is closed.	Test for 24VAC at valve motor. Check continuity between pins 3 and 12 of MCP and valve motor. If continuity, test for 5VDC to 10VDC between pin 1 and 12 of MCP. If no voltage, replace MCP.
	DIP switches on MCP are set incorrectly.	After setting a temperature set point sufficiently lower than room air, and waiting one minute, the display never indicates cooling is on or shows the wrong type cooling.	Refer to the section in this guide, DIP Switch Settings, and check that the compressors are enabled for DX systems or disabled for chilled water systems.
6. System does not heat or does not heat sufficiently.	Control parameters are not set correctly or are not set as expected.	System seems to function okay otherwise.	Refer to the section in this guide, Environment Control Settings, and check that all control parameters are set

			correctly.
	Humidifier is on.	Display shows the humidifier is operating.	The heaters don't operate while the humidifier is on. Refer to the section, Environment Control Settings, and check that all control parameters are set correctly.
	DIP switches on MCP are not set correctly.	After setting a temperature set point sufficiently higher than room air, and waiting one minute, the display never shows any stage of heating.	Refer to the section in this guide, DIP Switch Settings, and check that the heaters are enabled.
	Heaters are not on because of loose or broken wiring.	Display shows stage one or stage two heating but the heaters are not on.	Test for 24VAC at pin 27 of the MCP terminal connector. Test at pin 30 only if stage two is off. Test at both 30 and 33 if stage two is on. If no voltage at pin 27 or if voltage at each, check back to system terminal block and heater contactors. If voltage at pin 27 but, no voltage at pin 30
Complaint	Problem	Symptom	Action
			Or pin 33 if stage two is on, replace the MCP.
7. System does not humidify or does not do so sufficiently.	Control parameters are not set correctly or set as expected.	System seems to function okay otherwise.	Refer to the section, Environment Control Settings, and check that all control parameters are set correctly.
	Loose or broken wiring in low voltage circuits or bad MCP.	Display shows humidification operating but, the humidifier is not on.	Test for 24VAC at pins 4 and 5 of the MCP. If no voltage, check wiring back to system. If voltage at pin 4 but not 5 or vice-versa, replace the

			MCP.
8. System does not dehumidify or does not do so sufficiently.	Control parameters are not set correctly or are not set as expected.	System seems to function okay otherwise.	Refer to the section, Environment Control Settings, and check that all control settings are correct.
	Compressors or chilled water valve (depending on type system) is not operating.	Display shows dehumidification but, compressors are not running or, for chilled water systems, the valve is not open.	Check all items under 5 above.
Complaint	Problem	Symptom	Action
9. Display shows messages that don't make sense for this machine.	DIP switches on MCP are set incorrectly.	Display shows function messages for equipment not installed.	Refer to the section in this guide, DIP Switch Settings, and make sure the switches are set correctly.
10. System occasionally forgets control settings.	Battery is dead.	If the system is turned off for a few minutes and then turned on again, the set points are not as they were.	The battery on the MCP has an expected life of at least 5 years. Contact Compu-Aire for assistance in replacing the battery.
	Excessive noise on the power supply.	There has been a thunder storm in the area or there was a power outage or brown-out.	Random problems could be attributed to noise on the power source caused by machinery being switched on and off, power outages or thunder storms. These kinds of problems can be very difficult to identify. Make sure all wiring
Complaint	Problem	Symptom	Action
			connections are secure and that contactors do not chatter when switch-ed. Check that the sys-tem ground is properly connected to

			an earth ground.
11. System is on but, no-thing is operating. The blower is off.	No air flow, fire stat, water on floor or smoke detector alarm is activated.	The display shows one or more of these alarms and the Alarm LED is on.	The system is automatic-ally shut down if any of these conditions occur. Determine what the cause is and remedy. Then, press the Reset button on the MCP.

18 PART LIST

Sub-Components	Components	Voltage/Ph/Hz	Part Number	
REFRIGERANT PARTS	R407C, Scroll Compressor	460/3/60	201-150-012	
	Expansion Valve		239-150-002	
	HP Switch, Manual Reset		236-214-001	
	LP Switch		236-101-001	
	Filter Drier		233-150-002	
	Sight Glass		232-005-001	
Air Moving Parts	EC Motor		208-500-156	
	Airflow Switch		222-100-202	
	Filters Merv-14 & Merv-8		220-516-254 220-116-252	
Electrical Parts	Humidifier (Capacity-lbs)		460/3/60	262-130-331
	30.0			
	Contactor			274-040-323
	Aux Switch	274-030-336		
	Fuse	15 A		274-100-034
		20 A		271-160-515
		25 A		271-160-520
		40 A		271-160-525
	Transformer	271-260-440		
	Motor Protector	460/3/60		275-675-012 279-050-040
	Reheat Element (KW)	277/1/60 & 460/3/60	259-107-001 259-167-001 259-207-001 259-257-001	
	1.0			
	1.6			
2.0				
2.5				
Water Circuit	Water Valve (Nominal Diameter)-Modulating	460/3/60	248-131-314	
	2"			
	Water Flow Switch		226-100-012	
Accessories	Controller Board	460/3/60	254-743-102 254-743-202	
	MCP-SYS 2200+3S			
	MCP-SYS 2200+3M			

	MCP-SYS 2200+3L	254-743-302
	Touch Screen Display	
	Temp/Hum Sensor	254-744-302
	Connector Kit	254-743-302
	NTC Sensor	254-445-002
	Communication Card	
	pCOnet BACnet OVER MS/TP	254-549-004
	pCOWEB ETHERNET INTERFACE	254-549-003
	LONWORKS ECHELON	254-649-010



8167 Byron Rd., Whittier, CA 90606

PH (562) 945-8971 FAX (562) 696-0724

STANDARD ONE YEAR WARRANTY

Job Name: _____ Job No. _____ Date: _____

We warranty this Compu-Aire, Inc. computer room unit to be free from defects in material and workmanship; our obligation being limited to repairing or replacing at our factory any part (except as noted below) within one year from the date of shipment to the original purchaser. Parts to be returned to us PREPAID. Proof of start-up date must be submitted to the factory.

This warranty is effective only if the unit has been installed in accordance with our instructions and connected to proper and adequate electric, water and drain services, correctly dehydrated and placed into operation by a competent service representative.

Fan motor compressor warranty is covered by original manufacturer's warranty and any repair or replacement should be made by the local authorized service facility as listed the telephone book.

Maintenance and service such as replacing filters, humidifier cylinder, infra-red lamps, float valve assemblies, belts, cleaning, lubrication, calibration and adjusting are NOT INCLUDED in this warranty.

Replacement or repair parts shall be shipped from the factory pre-paid and invoiced for the full amount. Upon receipt of warranted parts within 30 days with prepayment of the component and which our inspection discloses the parts are defective, and show no signs of misuse, alterations, or abuse, full credit will be issued.

Compu-Aire, Inc. does not assume any responsibility for the labor expense for changing defective parts or replacement of any refrigerant or other cooling medium such as glycol etc.

All parts and goods are thoroughly inspected and packed to meet the requirements of railroad freight classifications bureaus, and under standard shippers risk, when they leave our factory. SHOULD GOODS ARRIVE DAMAGED, call the agents attention to damage, and have same noted on freight bill. For concealed damage, demand immediate inspection from agent of the shipping company and insist on a notation being made on freight bill.

_____	_____	_____
Purchaser-User	Model Number	Serial Number

		Serial Number

		Serial Number

		Serial Number

Technical Support/ Service

Website

www.compu-air.com

Location

Compu-Aire, Inc.
8167 Byron Road
Whittier, California 90606
United States of America
+1 (562) 945-8971 (Phone)
+1 (562) 696-0724 (Fax)

While every precaution has been taken to ensure the accuracy and completeness of this literature, Compu-Aire assumes no responsibility and disclaims all liability for damages resulting from use of this information or for any errors or omissions.

© 2014 Compu-Aire, Inc

All rights reserved throughout the world. Specifications subject to change without notice.

