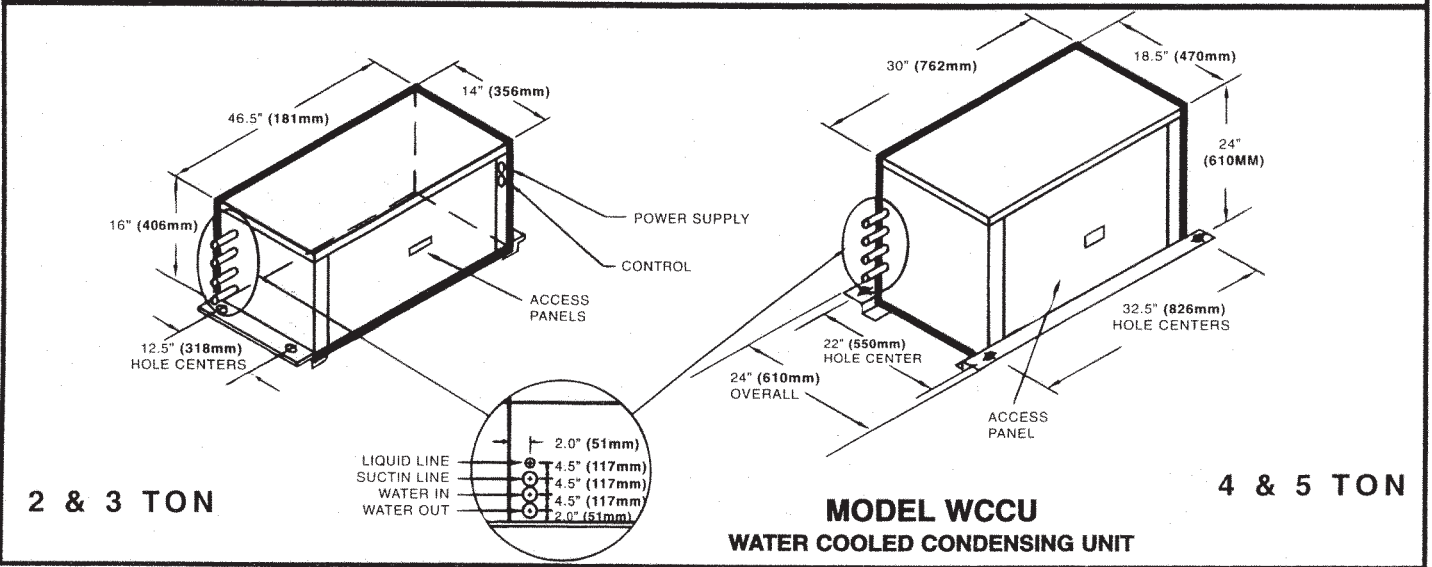
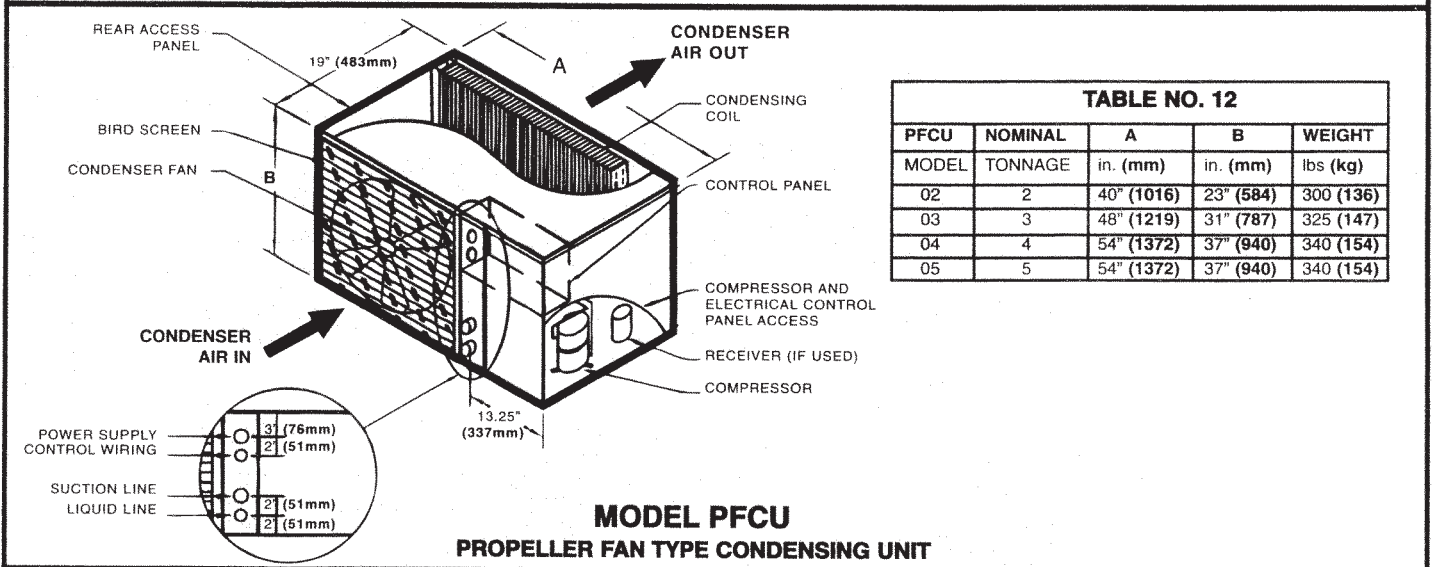
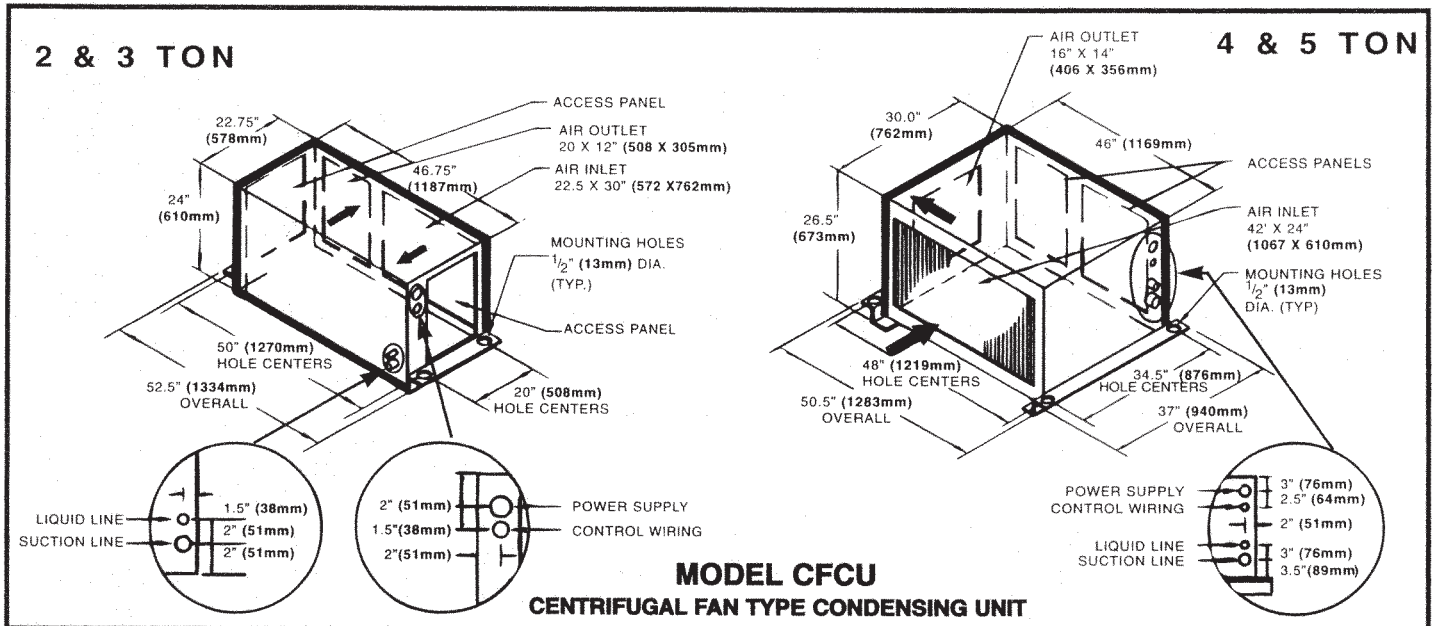


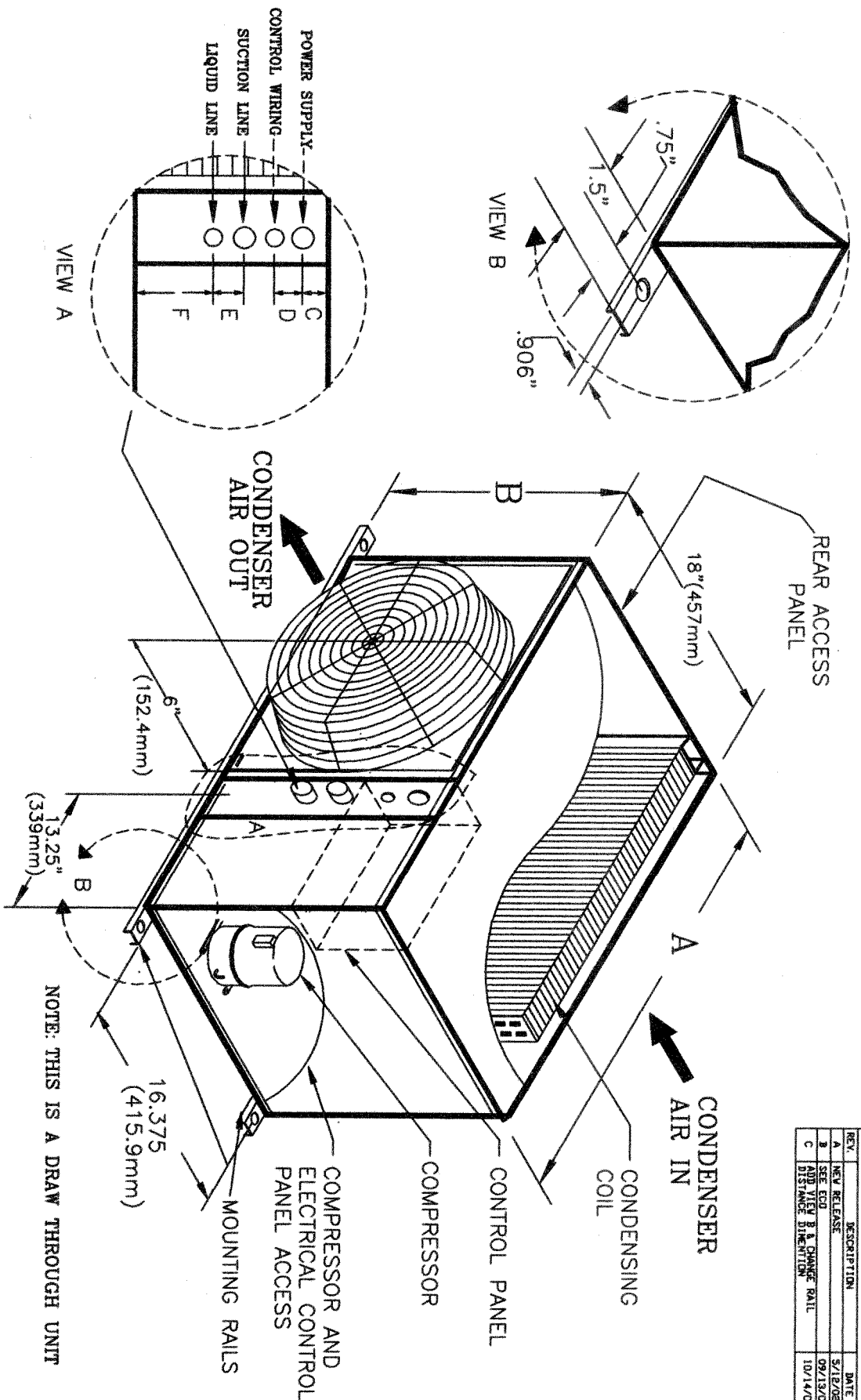
DIMENSIONAL DATA FOR CONDENSING UNITS



BOLD FACE DATA IN METRIC UNITS

PFCU MODEL	NOMINAL TONNAGE	A In. (mm)	B In. (mm)	C In. (mm)	D In. (mm)	E In. (mm)	F In. (mm)	WEIGHT LBS. (Kg.)
01.5	1 & 1.5	38" (965)	24" (610)	1.75" (44.4)	2.00" (50.8)	3.00" (76.2)	13.00" (330.2)	240 (108)
02	2	43" (1092)	24" (610)	1.75" (44.4)	2.00" (50.8)	3.00" (76.2)	13.00" (330.2)	300 (135)
03	3	50" (1270)	31" (787)	2.00" (50.8)	2.00" (50.8)	3.00" (76.2)	21" (533.4)	325 (146)
05	5	54" (1372)	37" (940)	3.00" (76.2)	2.00" (50.8)	3.00" (76.2)	21" (533.4)	340 (153)

**MODEL PFCU
PROPELLER FAN TYPE CONDENSING UNIT**



REV.	DESCRIPTION	DATE	APPROVED
A	NEW RELEASE	5/12/02	AP
B	SEE EDD	09/12/02	AP
C	ADD VIEW B & CHANGE RAIL DISTANCE DIMENSION	10/14/03	MA

COMPU-AIRE, Inc.

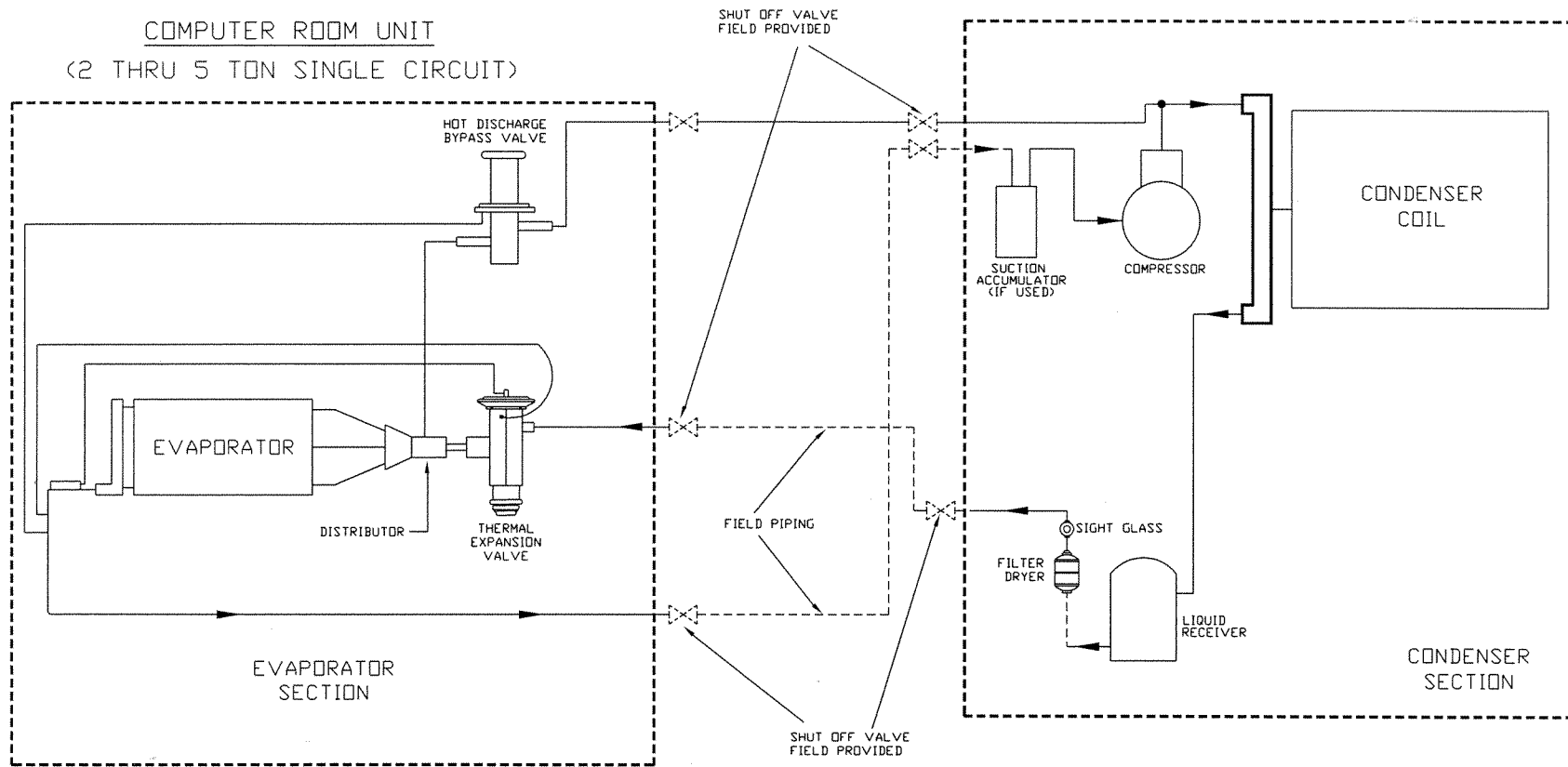
**PFCU
DIMENSIONAL DATA**

DRAWN BY: M. BREDILLA	DATE: 05/12/02
APPROVED BY:	REVISED: 10/14/03(C)
JOB NO.:	DWG NO.:

605-900-006

REVISIONS			
REV.	DESCRIPTION	DATE	APPROVED
A	NEW RELEASE	4-23-99	BF

COMPUTER ROOM UNIT
(2 THRU 5 TON SINGLE CIRCUIT)



LEGEND

- NOTES:
- 1- FIELD PIPING.....
 - 2- ALL PIPING MUST BE PER ASHRAE STANDARD

COMPU-AIRE, inc.

8167 BYRON ROAD WHITTIER, CA 90606
PH: 562-945-8971 FAX: 562-696-0724

REFRIGERANT PIPING FOR
COMPU-KOOL

DRAWN BY: B. FUNDERWHITE	DATE: 4-23-99
CHECKED BY:	REVISED:
APPROVED BY:	720-900-049

AIR COOLED CENTRIFUGAL FAN CONDENSING UNIT CFCU				TABLE NO.7
MODEL	CFCU-2	CFCU-3	CFCU-4	CFCU-5
NOMINAL TONNAGE	2	3	4	5
EER	8.3	10.6	8.3	9.4
COMPRESSOR DATA- Heat pump duty high efficiency scroll R-22				
Size	2	3	4	5
EER	13.8	13.7	13.8	14.0
FAN DATA- Centrifugal fan type direct drive				
Air Volume CFM(L/s)	1020(482)	1670(788)	3580(1690)	3580(1690)
Motor HP	3/4	3/4	1	1 1/2
ESP IN WC (Pa)	0.50(125)	0.50(125)	0.50(125)	0.50(125)
CONDENSER COIL DATA				
Face Area FT ² (m ²)	1.75(0.17)	4.6(0.43)	7.6(0.71)	7.6(0.71)
Rows	4	3	4	4
Fpi	12	12	12	12
PIPING DATA- All sizes are in copper OD				
Liquid Line	1/2"	1/2"	5/8"	5/8"
Suction Line	3/4"	3/4"	7/8"	7/8"
WEIGHT LBS(kg)	310(140)	340(154)	365(166)	395(180)

AIR-COOLED PROPELLER FAN CONDENSING UNIT PFCU				TABLE NO.8
MODEL	PFCU-2	PFCU-3	PFCU-4	PFCU-5
NOMINAL TONNAGE	2	3	4	5
EER	9.2	11.5	9.2	10.2
COMPRESSOR DATA- Heat pump duty high efficiency scroll R-22				
Size	2	3	4	5
EER	13.8	13.7	13.8	14.0
FAN DATA- Propeller fan type direct drive				
CFM (L/s)	1600(755)	2400(1132)	3200(1510)	4000(1888)
Fan Size	20"	24"	24"	24"
Fan Quantity	1	1	1	1
Motor Hp	1/3	1/3	3/4	3/4
Quantity Of Motors	1	1	1	1
CONDENSER COIL DATA				
Face Area FT ² (m ²)	5.0(0.46)	7.7(0.72)	10.5(0.98)	10.5(0.98)
Rows	2	2	3	3
PIPING DATA all sizes are in copper OD				
Liquid Line	1/2"	1/2"	5/8"	5/8"
Suction Line	3/4"	3/4"	7/8"	7/8"
WEIGHT LBS(kg)	310(140)	325(148)	335(152)	340(155)

WATER COOLED CONDENSING UNIT WCCU				TABLE NO.9
MODEL	WCCU-2	WCCU-3	WCCU-4	WCCU-5
NOMINAL TONNAGE	2	3	4	5
EER	10.2	12.3	10.3	11.2
COMPRESSOR DATA- Heat pump duty high efficiency scroll R-22				
Size	2	3	4	5
EER	13.8	13.7	13.8	14.0
WATER COOLED CONDENSER DATA				
Condenser Type	Co-Axial	Co-Axial	Co-Axial	Co-Axial
GPM(L/s) 75°F EWT	3.0(0.19)	4.5(0.28)	7.5(0.47)	7.5(0.47)
Pressure Drop Ft.of H2O(kPA)	10.1(30.1)	10.1(30.1)	10.1(30.1)	10.1(30.1)
GPM(L/s) 85°F EWT	6.0(0.39)	7.5(0.47)	15.0(0.95)	15.0(0.95)
Pressure Drop Ft.of H2O(kPA)	17.1(50.9)	17.1(50.9)	17.1(50.9)	17.1(50.9)
GPM(L/s) 105°F EWT	8.0(0.5)	12.0(0.76)	20.0(1.26)	20.0(1.26)
Pressure Drop Ft.of H2O(kPA)	37.1(110.9)	37.1(110.9)	37.1(110.9)	37.1(110.9)
PIPING DATA all sizes are in copper OD				
Liquid Line	1/2"	1/2"	5/8"	5/8"
Suction Line	3/4"	3/4"	7/8"	7/8"
Water Supply	7/8"	1 1/8"	1 1/8"	1 1/8"
Water Return	7/8"	1 1/8"	1 1/8"	1 1/8"
Weight LBS(kg)	275(125)	290(132)	320(145)	345(159)

ELECTRICAL DATA

Compu Kool III Air Conditioners using scroll compressor, electric reheat and electronic electrode type humidifier. For electrical data using alternate reheat, no reheat, alternate humidifier, or no humidifier, consult factory.

TABLE NO.13				
AIR COOLED - CKA WATER COOLED - CKW				
GLYCOL COOLED - CKG GLYCOL COOLED ENERGY MISER - CKG-EM				
VOLT/PH/HZ	CKA-23* CKW-23* CKG-23* CKG-23* EM	CKA-33* CKW-33* CKG-33* CKG-33* EM	CKA-43* CKW-43* CKG-43* CKG-43* EM	CKA-53* CKW-53* CKG-53* CKG-53* EM
208/3/60				
FLA	30.2	31.1	46.7	52.8
MCA	37.0	38.1	57.4	64.6
MFS	50A	50A	70A	80A
380/3/50				
FLA	14.5	16.0	25.0	27.3
MCA	17.8	19.7	30.9	33.6
MFS	20A	25A	40A	45A
460/3/60				
FLA	13.5	14.7	22.6	25.0
MCA	16.5	18.0	27.8	33.6
MFS	20A	25A	35A	40A
575/3/60				
FLA	11.3	11.7	17.8	19.9
MCA	13.8	14.4	21.9	24.4
MFS	20A	20A	30A	30A

TABLE NO.14				
EVAPORATOR SECTION - CKE AND CHILLED WATER - CKC				
VOLT/PH/HZ	CKE-23* CKC-23*	CKE-33* CKC-33*	CKE-43* CKC-43*	CKE-53* CKC-53*
208/3/60				
FLA	19.9	19.8	31.7	33.5
MCA	24.8	24.8	39.7	41.9
MFS	25A	25A	40A	45A
380/3/50				
FLA	10.3	10.3	16.8	17.3
MCA	12.9	12.9	21.0	21.6
MFS	15A	15A	25A	25A
460/3/60				
FLA	8.9	8.9	14.4	15.0
MCA	11.2	11.2	17.9	18.8
MFS	15A	15A	20A	20A
575/3/60				
FLA	7.0	7.0	11.4	12.0
MCA	8.8	8.8	14.3	15.0
MFS	15A	15A	20A	20A

TABLE NO.15				
CENTRIFUGAL FAN CONDENSING UNIT - CFCU				
VOLT/PH/HZ	CFCU-23*	CFCU-33*	CFCU-43*	CFCU-53*
208/3/60				
FLA	15.5	16.4	20.0	24.3
MCA	18.1	19.3	23.8	29.1
MFS	30A	30A	40A	50A
380/3/50				
FLA	7.4	7.4	10.3	12.1
MCA	8.6	8.8	12.4	14.6
MFS	15A	15A	20A	25A
460/3/60				
FLA	6.9	8.2	10.6	12.4
MCA	8.0	9.6	12.7	14.9
MFS	15A	15A	20A	25A
575/3/60				
FLA	5.3	5.7	8.4	9.9
MCA	6.4	6.9	10.0	11.9
MFS	15A	15A	15A	20A

TABLE NO.16				
PROPELLER FAN CONDENSING UNIT - PFCU				
VOLT/PH/HZ	PFCU-23*	PFCU-33*	PFCU-43*	PFCU-53*
208/3/60				
FLA	12.9	13.8	20.0	24.3
MCA	15.5	16.7	23.8	29.1
MFS	25A	30A	40A	50A
380/3/50				
FLA	7.2	7.0	10.7	12.5
MCA	8.4	8.4	12.8	15.0
MFS	15A	15A	20A	25A
460/3/60				
FLA	6.6	6.9	10.7	12.5
MCA	7.75	8.3	12.8	15.0
MFS	15A	15A	20A	25A
575/3/60				
FLA	6.0	6.0	8.0	10.5
MCA	7.2	7.2	9.4	12.5
MFS	15A	15A	15A	20A

TABLE NO.17				
WATER COOLED CONDENSING UNIT - WCCU				
VOLT/PH/HZ	WCCU-23*	WCCU-33*	WCCU-43*	WCCU-53*
208/3/60				
FLA	10.5	11.4	15.0	19.3
MCA	13.1	14.3	18.8	24.1
MFS	25A	25A	35A	45A
380/3/50				
FLA	4.6	5.7	8.2	10.0
MCA	5.7	7.1	10.3	12.5
MFS	15A	15A	20A	25A
460/3/60				
FLA	4.3	5.7	8.6	10.0
MCA	5.4	7.1	10.3	12.5
MFS	15A	15A	20A	25A
575/3/60				
FLA	4.3	4.7	6.4	7.9
MCA	5.4	5.9	8.0	9.9
MFS	15A	15A	15A	20A

*DENOTES VOLTAGE 2=208/230, 3=380/415, 4=460, 5=575